

Knife and Guard Options



Knife Options for HD Draper Series

Knife	Fine Tooth	Fine Tooth	Coarse Tooth	Coarse Tooth S/L
Guards	Long	Short	Short	Short
Canola, Wheat, Barely, Flax & Rye	Best	Better	Better	Good
Peas, beans, soybeans, & lentils	Good	Better	Best	Better
No-till soybeans	Good	Good	Better	Best

Long Guards work best in tough straw to penetrate lodged/matted crops

Can cause “pushing” during on ground cutting with high debris

Coarse Sections can work well in green straw tough conditions but can cause flagging in dry straw with high ground speed.

Lentils and Flax cut best with fine knife to better pierce the tough stems for a clean cut

4-Inch Standard Long-Point Knife Guards

- Recommended for 600R platforms
900D, 600D and HD Drapers
Best for tough small grains
- Heat-treated and carburized for wear-resistant outer surface
- Long points help comb and lift crop for more efficient cutting
- Recommended in small grains
- Standard equipment on rigid and draper platforms up to model-year 2008



H213508 (SLS)



H213405 (LSL)

4-Inch High-Wear Long-Point Knife Guards

- Recommended for 600R platforms 900D, 6/700D and HD Drapers
Best for tough small grains
- Heat-treated and boronized for extra-long wear life
- Boronization is a process that diffuses boron into the surface of the guard for increased wear resistance
- Interchangeable with black standard 4-inch knife guards
- Standard on rigid and draper platforms for model-year 2008 and newer
- Painted green for high-wear indication



H229539 (LSL)

H229540 (SLS)

4-Inch Standard Blunt-Point Knife Guards

- Recommended for 600F platforms and 6/700FD, HD Drapers
- Best for on ground cutting (Soybeans, lentils)
- Blunt points prevent stabbing of stalks and pushing
- Heat-treated and carburized for wear-resistant outer surface
- Designed for flex platforms to provide maximum cutting performance at lower cut heights
- Standard equipment on 600F platforms up to model-year 2008



H213398 (LSL)



H213507 (SLS)

4-Inch High-Wear Blunt-Point Knife Guards

- Recommended for 600F platforms
6/700FD and HD Drapers
Best for on ground cutting (Soybeans, lentils)
- Heat-treated and boronized for extra-long wear life
- Boronization is a process that diffuses boron into the surface of the guard for increased wear resistance
- Interchangeable with black standard 4-inch knife guards
- Standard on 600 Series Flex platforms for model-year 2008 and newer
- Painted green for high-wear indication



H229537 (LSL)

H229538 (SLS)

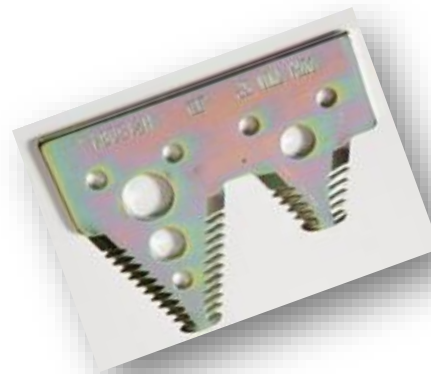
4-Inch No-Till Knife Guards

- Recommended for 600F Platforms and 6/700FD and HD Drapers operating in no-till conditions in combination with short/long knife sections
- Absence of cross bar allows additional room for stalk to enter guard, preventing crop pushing
- If needed, Commonly placed on outside 3-6 guards
- Standard wear Only
- Use Only H215064 or H215065 short/long Dura-Twin sickle sections with these guards



H218701 (SLS)

H218702 (LSL)



4-Inch Non-Clog Knife Guards

- Fits 900D, 600F, 600R, Platforms 6/700D, and 6/700FD and HD Series Drapers
- Recommended for heavy trash conditions or wet tangled crops
- Helps prevent crop pushing in no-till wheat stubble in Soybeans
- If installed, commonly found on outside 3-6 guards
- Possible poor cutting in light small grains
- Reduced ability to pick up down crop
- H218703 Not Recommended due to crop hair pinning on points



HXE19625 (High Wear)



H218703 (Standard Wear)

4-Inch Dual-Drive Bottom Center Guards

- Required on 6/700D 6/700FD and HD Drapers with dual knife drive
- HXE19623 – bottom RH center guard for 6/700D and HD drapers with long guards
- HXE19625 – bottom RH center guard for 6/700FD HD Drapers with short guards
- HXE19623 features elongated tip, allowing use of crop lifters
- HXE18172 – bottom LH guard features raised block to help eject crop material and prevent plugging
- All guards heat-treated and boronized for extra-long wear life



HXE19623 (Bottom
RH 6/700D & HD
w/Long guards)



HXE19625
(Bottom RH
6/700FD & HD)



HXE18172 (Bottom LH 6/700D
and 6/700FD & HD)

4-Inch 6/700D Dual-Drive Top Center Guard

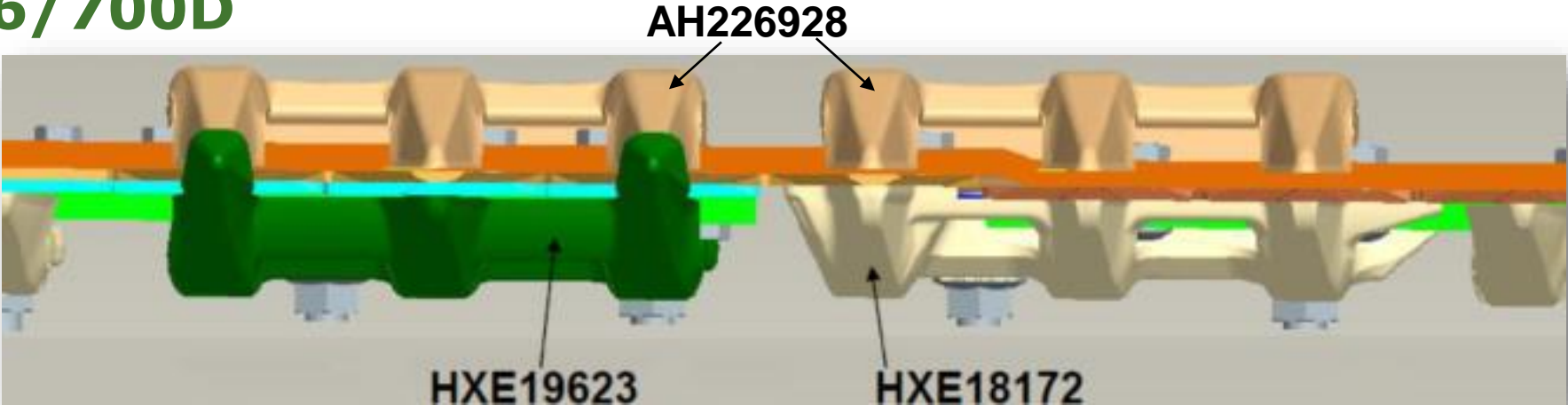
- Required on 6/700D platforms with dual knife drive system
- Acts as a ledger cutting surface for end of upper left-hand knife segment
- Acts as a hold-down for center overlapping region of dual-drive system
- Painted black for standard wear



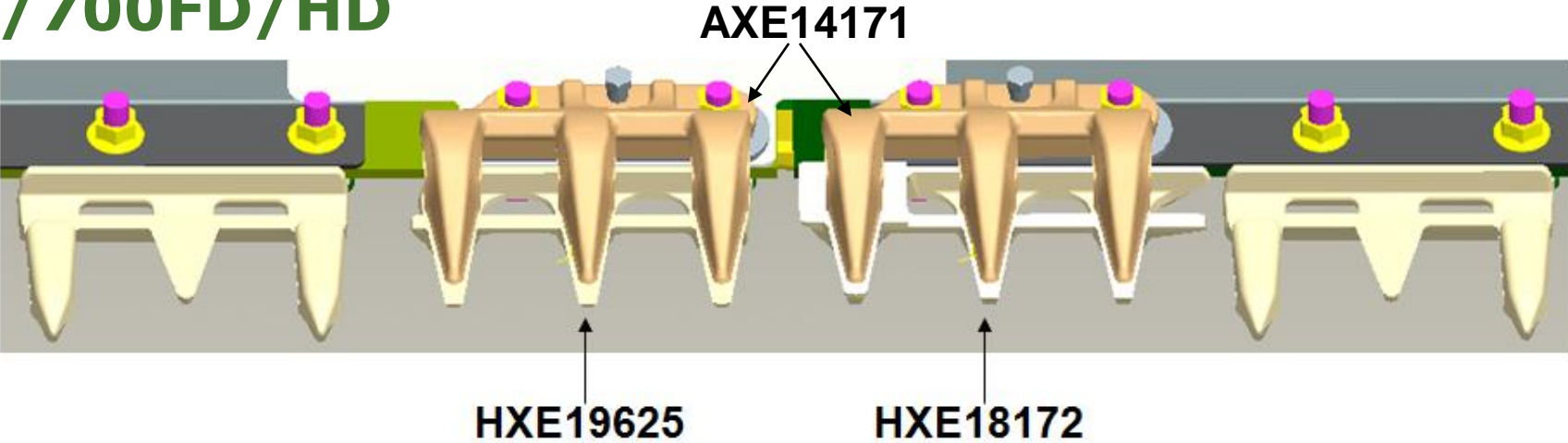
AH226928

Dual-Drive Center Overlapping Region

6/700D



6/700FD/HD



6/700 Draper End Guards

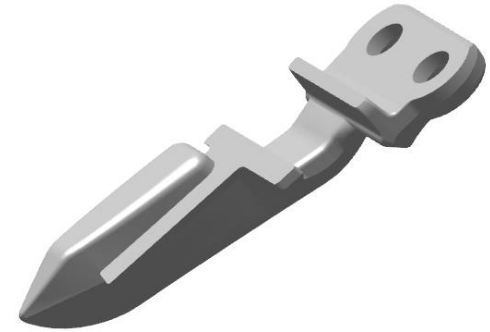
- Required on 6/700D and 6/700FD Draper Platforms
- One single-point guard on RH and LH end of 6/700D
 - 2 total
- One single-point guard on RH end of 6/700FD
 - H228526
- Standard wear



H228526

HD Draper End Guards

- Required on all HDR, HDX and HDF Draper Platforms
- One single-point guard on RH and LH end of the machine
- Standard wear



H228526 - RH



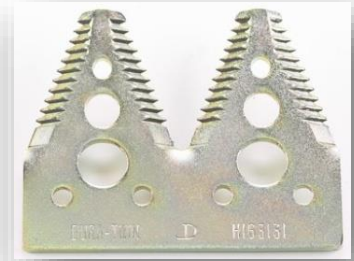
HXE156569 - LH

4-Inch Dura-Twin Sickle Sections

- All Dura-Twin sections fit 600D, 900D, 6/700FD and HD Series Drapers
- 600R, 600F Platforms
- Fine-tooth (14 serrations per-inch) recommended for small grains or grassy undergrowth conditions
- Coarse-tooth (7 serrations per-inch) recommended for coarse grains such as soybeans; larger serrations grab stalks and pull them into cutting surface
- Short/long sections recommended for no-till conditions
- Short tip allows more room for stalks to enter cutting regions without crop pushing
- Short/long sections can be used with standard or no-till guards



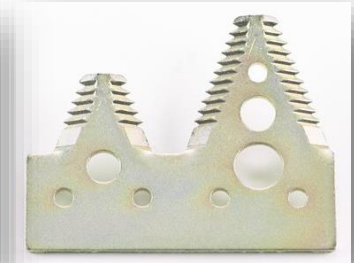
H153329
(Fine-tooth)



H163131
(Coarse-tooth)



H215025
(Short/long,
fine-tooth)



H215064
(Short/long,
coarse-tooth)

Flange Nut:
14M7303

Flange Bolt:
H158341

4-Inch Dura-Twin Sickle Sections

- 6/700D 6/700FD and HD Draper dual knife drive systems feature (5) special countersunk Dura-Twin sickle sections in center overlapping region
- Section features countersunk bolt hole and requires unique countersunk bolt to allow for flush surface in overlapping region
- Fine Section: H226351
- Coarse Section: H226352
- Long/Short Coarse: H226353
- Special Countersunk Bolt
 - H228135



3-Inch Knife Guards

- Manufactured of forged steel to create a smooth surface for snag-free flow to the knife
- Special heat-treating process provides extra hardness, allowing the guard to retain shock-resistant characteristics
- H171031 Carburization process aligns carbon with a wear-resistant outer surface for increased wear life and extended ledger plate sharpness
- More wear-resistant than H145791 knife guard; maintains sharper cutting edge for longer period of time
- Ideal for abrasive soil conditions



H145791-Standard



H171031-Carburized

3-Inch Knife Guards

- H153719 Manufactured of high carbon and chrome steel for increased core hardness, which provides higher tensile strength
- Double heat-treating of ledger surface provides a hard, wear-resistant cutting surface to resist bending and breaking in tough, rocky cutting conditions
- Most durable 3-Inch knife guard and best choice for rocky conditions
- H113571 - Same core material and surface as H145791 standard guard
- Crossbar between fingers provides extra strength for rocky conditions
- Not recommended for weedy conditions



H153719- DuraGuard™



H113571-Rocky Conditions

3-Inch Dura-Lite and Dura-Cut Sickle Sections

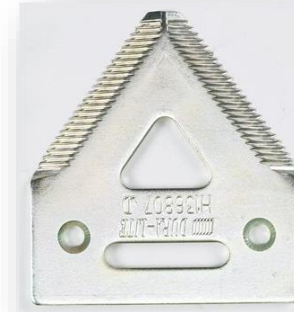
- All Dura-Cut and Dura-Lite sections fit 200, 900, 900R, and 900F Series Platforms
- Fine-tooth (14 serrations per-inch) recommended for small grains or grassy undergrowth conditions
- Coarse-tooth (7 serrations per-inch) recommended for coarse grains such as soybeans; larger serrations grab stalks and pull them into cutting surface
- Dura-Cut preceded Dura-Lite
- Dura-Cut can be more resistant to rock breakage due to its solid build
- Dura-Lite reduces mass of cutterbar and helps reduce possible vibration of the knife drive system



H213799
Dura-Cut
(Fine-tooth)



H213800
Dura-Cut
(Coarse-tooth)



H207929
Dura-Lite
(Fine-tooth)



H207930
Dura-Lite
(Coarse-tooth)



JOHN DEERE