

FILTER OVERVIEW WITH SERVICE INTERVALS AND CAPACITIES

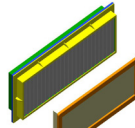
M4025 Self-Propelled Sprayers

CAB

ACTIVATED CARBON FILTER KIT

[SJ14288](#)

(Includes 2 Fresh Air and 2 Recirculation Air Filters).
Replace every 250 operating hours or annually.



HYDRAULIC RESERVOIR STRAINERS

[AN207571](#) (QTY 2) AND [AN207572](#)

Replace as required.
(Click here for [capacity](#))



ON BOARD AIR (OBA)

AIR DRYER CARTRIDGE -

[AN204967](#)

Replace annually.



AUXILIARY HYDRAULIC PUMP FILTER -

[AT314164](#)

Replace after every 500 hours.

(Click here for [capacity](#))



HYDROSTATIC SYSTEM

OIL FILTER -

[AN203010](#)

Replace after 500 hours.

(Click here for [capacity](#))



ENGINE

OIL FILTER -

[RE504836](#)

Replace after first 100 hours then after first 500 hours and every 500 hours thereafter. The extended 500 hour interval is only allowed if using Plus-50™ II oil, JD OEM Oil Filter and diesel fuel with sulfur content less than 15mg/kg (15 ppm).

(Click here for [capacity](#))



ENGINE

PRIMARY AIR FILTER -

[AL172781](#)

Replace after every 1500 hours or 2 years.

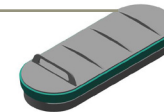


ENGINE

SECONDARY AIR FILTER -

[AL150288](#)

Replace after every 1500 hours or 2 years.



WATER SEPARATOR

FILTERING ELEMENT -

[RE541922](#)

Replace annually.



ENGINE

FUEL FILTER -

[RE522878](#)

Replace after every 500 hours.



JOHN DEERE

Genuine Parts and Service

CAPACITIES

M4025 Self-Propelled Sprayers

CAPACITIES (Approximate):

Fuel Tank:

..... 268 L (70.8 gal)

**Cooling System with Heater:
Cool-Gard™ II**

..... 29.4 L (7.8 gal)

**Crankcase including Filter:
Plus-50™ II**

..... 19 L (5 gal)

**Hydraulic Reservoir (Capacity at Sight Gauge):
Torq-Gard™ Supreme**

..... 41 L (10.83 gal)

Hydraulic System:

Torq-Gard™ Supreme

..... 112 L (29.59 gal)

Final Drives (Hub) Each:

GL-5

..... 1.2 L (0.3 gal)

[Return to Filter Overview](#)

