

FILTER OVERVIEW WITH SERVICE INTERVALS AND CAPACITIES

4630 Self-Propelled Sprayer

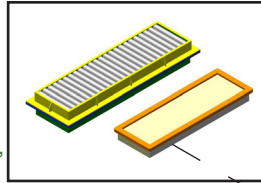
CAB

ACTIVATED CARBON FILTER KIT - [SJ14288](#)

(Includes 2 Fresh Air and 2 Recirculation Air Filters)

Replace every 250 operating hours or annually, whichever occurs first.

(Interval may vary according to operating conditions.)



ON BOARD AIR (OBA)

AIR DRYER CARTRIDGE - [AN204967](#)

Replace annually.



AUXILIARY HYDRAULIC PUMP FILTER - [AT314164](#)

Replace after every 500 hours.

(Click here for [capacity](#))

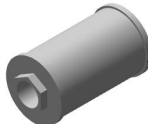


HYDRAULIC

RESERVOIR STRAINERS - [AN207571](#) (QTY 2) AND [AN207572](#)

Replace as required.

(Click here for [capacity](#))



HYDROSTATIC/HYDRAULIC PUMP FILTERS - [AN203010](#)

Replace (2) pump filters after every 500 hours.

(Click here for [capacity](#))



ENGINE SECONDARY FUEL FILTER - [RE522878](#)

Replace every 500 hours. When replacing Secondary Fuel Filter also replace Primary Fuel Filter



ENGINE

PRIMARY AIR FILTER - [AL172781](#)

Replace after every 1500 hours or 2 years, whichever occurs first.



ENGINE

SECONDARY AIR FILTER - [AL150288](#)

Replace after every 1500 hours or 2 years, whichever occurs first.



ENGINE

PRIMARY FUEL FILTER - [RE541922](#)

Replace after every 500 hours. When replacing Primary fuel filter Replace Secondary fuel filter.



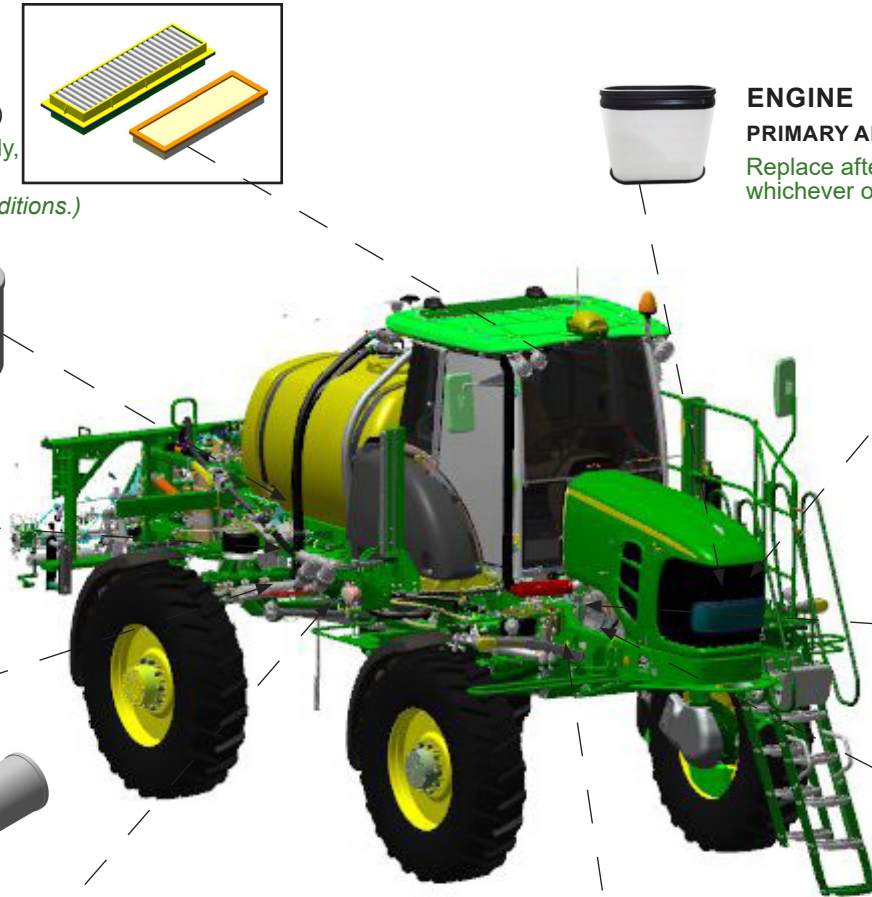
ENGINE

OIL FILTER - [RE504836](#)

Initial Oil Filter change is at 100 hours; then every 250 hours thereafter. Refer to the OM for special note regarding extended drain intervals.

If PLUS-50™ engine oil and a John Deere™ filter are used, the oil and filter service interval may be extended 50% up to 500 hours.

(Click here for [capacity](#))



JOHN DEERE

Genuine Parts and Service

CAPACITIES

4630 Self-Propelled Sprayer

CAPACITIES (Approximate):

Fuel Tank:

..... 269 L (71 gal)

Cooling System with Heater:

Cool-Gard™ II

..... 29.4 L (7.8 gal)

Crankcase including Filter:

Plus-50™ II

..... 19 L (5 gal)

Hydraulic Reservoir (Capacity at Sight Gauge):

Torq-Gard™ Supreme

..... 53.7 L (14.2 gal)

Hydraulic System:

Torq-Gard™ Supreme

..... 151 L (40 gal)

Final Drives (Hubs) Each:

GL-5

..... 2 L (0.53 gal)

[Return to Filter Overview](#)

