

ENGINE	550LC
Type	Cummins N14-C with turbocharger, water cooler, and direct injection
Rated power	361 SAE net hp (269 kW) @ 1,800 rpm
Cylinders	6
Displacement	854 cu. in. (14 L)
Maximum net torque	1,240 lb.-ft. (1682 Nm) @ 1,400 rpm
Fuel consumption, typical	11 to 17 gal./hr. (42 to 65 L/h)
Cooling fan	Suction-type drive
Electrical system	24-volt with 75-amp alternator
Batteries (two 12-volt)	Reserve capacity: 280 min.
Off-level capacity	70% (35 deg.)

HYDRAULIC SYSTEM	
Main pumps	2 variable-displacement axial-piston open-center
Maximum flow	2 x 101 gpm (2 x 382 L/min)
Minimum flow	2 x 21.1 gpm (2 x 80 L/min)
Pilot pump	One gear
Maximum rated flow	7.9 gpm (30.0 L/min)
Pressure setting	570 psi (3923 kPa)
System operating pressure	
Implement circuits	4,340 psi (29 920 kPa)
Travel circuits	4,980 psi (34 340 kPa)
Swing circuits	4,550 psi (31 370 kPa)
Power boost	4,552 psi (31 380 kPa)
Oil filtration	One 10-micron full-flow return filter with bypass / one pilot oil filter / one suction filter

CYLINDERS	
Boom	2
Bore	7.09 in. (180 mm)
Rod diameter	4.92 in. (125 mm)
Stroke	66.43 in. (1700 mm)
Arm	1
Bore	7.87 in. (200 mm)
Rod diameter	5.51 in. (140 mm)
Stroke	78.15 in. (1985 mm)
Bucket	1
Bore	7.09 in. (180 mm)
Rod diameter	5.12 in. (130 mm)
Stroke	57.09 in. (1450 mm)

SWING MECHANISM	
Swing speed	0–8.0 rpm
Swing torque	141,020 lb.-ft. (191 200 Nm)

UNDERCARRIAGE	
Carrier rollers	3 per side
Track rollers	9 per side
Idlers	1 per side
Shoes	52 per side
Track guides	Front, center, and rear
Track adjustment	Hydraulic
Travel speed	
Low	0–2.0 mph (0–3.2 km/h)
High	0–2.9 mph (0–4.7 km/h)
Drawbar pull	83,800 lb. (373 kN)

CAPACITIES	
Fuel tank	185 gal. (700 L)
Cooling system	17.5 gal. (66.2 L)
Engine lubrication, including filter	11.5 gal. (44 L)
Pump drive	1.4 gal. (5 L)
Hydraulic system	153 gal. (580 L)
Propel gearbox	3.4 gal. (13 L) each
Swing drive	2.1 gal. (8 L) each
Hydraulic tank	67 gal. (254 L)

WEIGHTS AND GROUND PRESSURE		
	<i>Operating Weight</i>	<i>Ground Pressure</i>
Equipped with 24-ft. 11-in. (7.6 m) boom, 11-ft. 6-in. (3.5 m) arm, and 60-in., 3.86- cu.-yd., 7,400-lb. (3356 kg) bucket		
24-in. (600 mm) triple-bar grouser	123,867 lb. (56 185 kg)	14.5 psi (99.9 kPa)
30-in. (750 mm) triple-bar grouser	125,630 lb. (56 985 kg)	11.7 psi (88.0 kPa)
36-in. (900 mm) triple-bar grouser	127,394 lb. (57 785 kg)	9.9 psi (68.5 kPa)

WEIGHTS AND GROUND PRESSURE (continued)

550LC

Equipped with 21-ft. 8-in. (6.6 m) ME boom, 9-ft. 6-in. (2.9 m) ME arm, and 60-in., 4.62-cu.-yd., 8,360-lb. (3792 kg) bucket

24-in. (600 mm) triple-bar grouser.....	125,357 lb. (56 861 kg)	14.7 psi (101.1 kPa)
30-in. (750 mm) triple-bar grouser.....	127,121 lb. (57 661 kg)	11.9 psi (82.0 kPa)
36-in. (900 mm) triple-bar grouser.....	128,884 lb. (58 461 kg)	10.1 psi (69.3 kPa)

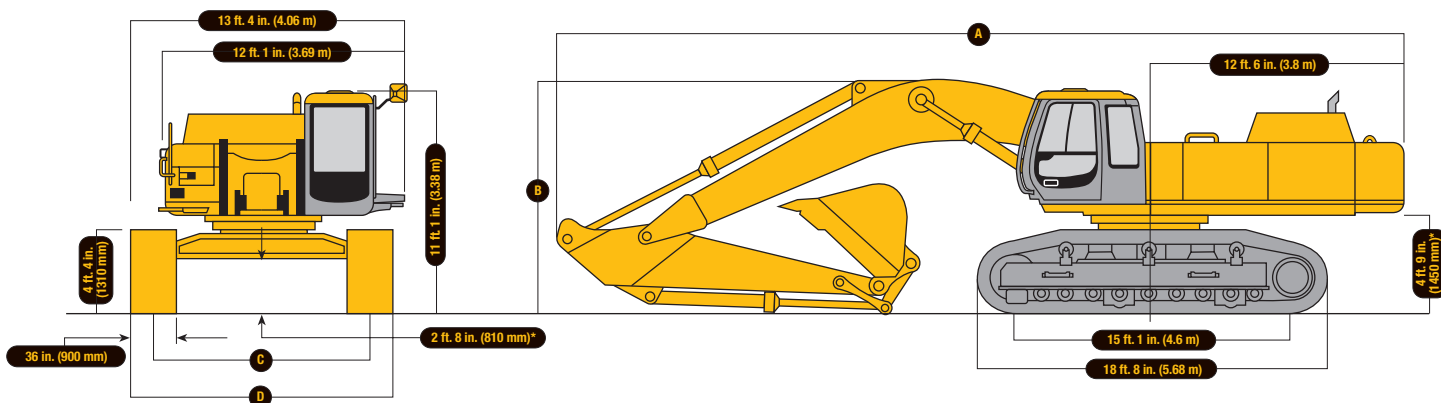
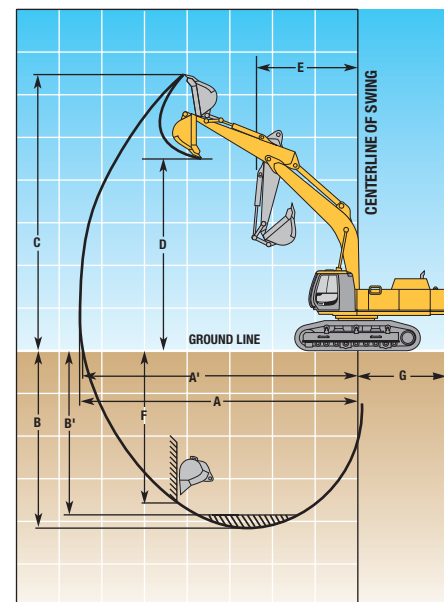
OPERATING INFORMATION

	<i>Arm Length 9 ft. 6 in. (2.9 m) and Boom Length 24 ft. 11 in. (7.6 m)</i>	<i>Arm Length 11 ft. 6 in. (3.5 m) and Boom Length 24 ft. 11 in. (7.6 m)</i>	<i>Arm Length 13 ft. 5 in. (4.1 m) and Boom Length 24 ft. 11 in. (7.6 m)</i>	<i>Arm Length 17 ft. 1 in. (5.2 m) and Boom Length 24 ft. 11 in. (7.6 m)</i>	<i>Arm Length 9 ft. 6 in. (2.9 m) and ME Boom Length 21 ft. 8 in. (6.6 m)</i>
Arm force*	57,800 lb. (257 kN)	47,000 lb. (209 kN)	42,500 lb. (189 kN)	37,900 lb. (169 kN)	57,100 lb. (254 kN)
Bucket digging force*	56,200 lb. (250 kN)	56,400 lb. (251 kN)	56,400 lb. (251 kN)	50,300 lb. (224 kN)	63,300 lb. (281 kN)
A Maximum reach.....	41 ft. (12.50 m)	42 ft. 10 in. (13.05 m)	44 ft. 6 in. (13.57 m)	47 ft. 5 in. (14.45 m)	37 ft. 9 in. (11.51 m)
A' Maximum reach @ ground level.....	40 ft. 3 in. (12.26 m)	42 ft. 1 in. (12.82 m)	43 ft. 10 in. (13.35 m)	46 ft. 9 in. (14.24 m)	36 ft. 11 in. (11.24 m)
B Maximum digging depth.....	25 ft. 3 in. (7.70 m)	27 ft. 3 in. (8.30 m)	29 ft. 2 in. (8.89 m)	32 ft. 2 in. (9.81 m)	22 ft. 8 in. (6.91 m)
B' Maximum digging depth @ 8-ft. (2.44 m) flat bottom.....	24 ft. 9 in. (7.55 m)	26 ft. 10 in. (8.17 m)	28 ft. 9 in. (8.77 m)	31 ft. 10 in. (9.71 m)	22 ft. 2 in. (6.76 m)
C Maximum cutting height.....	39 ft. 1 in. (11.90 m)	40 ft. (12.19 m)	40 ft. 7 in. (12.36 m)	41 ft. 7 in. (12.67 m)	36 ft. 3 in. (11.04 m)
D Maximum dumping height.....	26 ft. 3 in. (8.01 m)	27 ft. 1 in. (8.26 m)	27 ft. 8 in. (8.44 m)	30 ft. 1 in. (9.16 m)	23 ft. 7 in. (7.20 m)
E Minimum swing radius.....	17 ft. 9 in. (5.42 m)	17 ft. 3 in. (5.26 m)	17 ft. 2 in. (5.24 m)	17 ft. 3 in. (5.27 m)	15 ft. 6 in. (4.72 m)
F Maximum vertical wall.....	22 ft. 4 in. (6.80 m)	24 ft. 8 in. (7.53 m)	26 ft. 7 in. (8.11 m)	29 ft. 2 in. (8.90 m)	17 ft. (5.17 m)
G Tail-swing radius.....	12 ft. 6 in. (3.80 m)	12 ft. 6 in. (3.80 m)	12 ft. 6 in. (3.80 m)	12 ft. 6 in. (3.80 m)	12 ft. 6 in. (3.80 m)

*Maximum digging forces and lift capacities with power boost.

DIMENSIONS

- A** With 9-ft. 6-in. (2.9 m) arm.....42 ft. 7 in. (12.98 m)
With 11-ft. 6-in. (3.5 m) arm.....42 ft. 4 in. (12.90 m)
With 13-ft. 5-in. (4.1 m) arm.....42 ft. 3 in. (12.89 m)
With 17-ft. 1-in. (5.2 m) arm.....41 ft. 4 in. (12.59 m)
With ME boom and 9-ft. 6-in. (2.9 m)
ME arm.....39 ft. 4 in. (11.99 m)
- B** With 9-ft. 6-in. (2.9 m) arm.....14 ft. 7 in. (4.44 m)
With 11-ft. 6-in. (3.5 m) arm.....13 ft. 11 in. (4.25 m)
With 13-ft. 5-in. (4.1 m) arm.....14 ft. 8 in. (4.47 m)
With 17-ft. 1-in. (5.2 m) arm.....17 ft. 6 in. (5.33 m)
With ME boom and 9-ft. 6-in. (2.9 m)
ME arm.....15 ft. 8 in. (4.77 m)
- C** Operating position.....10 ft. 6 in. (3.20 m)
Transport position.....8 ft. 10 in. (2.70 m)
- D** With 36-in. (900 mm) triple-grouser shoes
Operating position.....13 ft. 5 in. (4.10 m)
Transport position.....11 ft. 10 in. (3.60 m)



*Excluding track-shoe lug.

LIFT CAPACITIES

Boldface italic type indicates hydraulic-limited capacities; lightface type indicates stability-limited capacities, in lb. (kg). Ratings at bucket lift hook, machine equipped with 36-in. (900 mm) triple-grouser shoes and 23,200-lb. (10 500 kg) counterweight, situated on firm, uniform supporting surface. Total load includes weight of cables, hook, etc. Figures do not exceed 87% of hydraulic capacities or 75% of weight needed to tip machine. All lift capacities are with power boost or in precision mode.

Load Point Height	15 ft. (4.57 m)		20 ft. (6.10 m)		25 ft. (7.62 m)		30 ft. (9.14 m)		35 ft. (10.67 m)	
	Over Front	Over Side	Over Front	Over Side	Over Front	Over Side	Over Front	Over Side	Over Front	Over Side
<i>With 9-ft. 6-in. (2.9 m) arm, 24-ft. 11-in. (7.6 m) boom, and 4,760-lb. (2160 kg) bucket</i>										
20 ft. (6.10 m)					22,500 (10 200)	22,500 (10 200)	20,400 (9300)	19,400 (8800)		
15 ft. (4.57 m)			31,500 (14 300)	31,500 (14 300)	25,000 (11 300)	25,000 (11 300)	21,400 (9700)	18,700 (8500)		
10 ft. (3.05 m)					27,800 (12 600)	24,300 (11 000)	22,900 (10 400)	17,800 (8100)	19,900 (9000)	13,300 (6000)
5 ft. (1.52 m)					30,100 (13 700)	22,900 (10 400)	24,100 (10 900)	17,000 (7700)	20,300 (9200)	12,900 (5900)
Ground Line					31,100 (14 100)	22,100 (10 000)	24,800 (11 200)	16,500 (7500)	20,200 (9200)	12,700 (5800)
-5 ft. (-1.52 m)			39,000 (17 700)	31,300 (14 200)	30,600 (13 900)	21,700 (9800)	24,400 (11 100)	16,200 (7300)		
-10 ft. (-3.05 m)	42,000 (19 100)	42,000 (19 100)	35,600 (16 100)	31,600 (14 300)	28,500 (12 900)	21,800 (9900)	22,300 (10 100)	16,300 (7400)		
-15 ft. (-4.57 m)	35,300 (16 000)	35,300 (16 000)	30,100 (13 700)	30,100 (13 700)	24,000 (10 900)	22,400 (10 200)				
-20 ft. (-6.10 m)			20,600 (9300)	20,600 (9300)						

<i>With 11-ft. 6-in. (3.5 m) arm, 24-ft. 11-in. (7.6 m) boom, and 4,760-lb. (2160 kg) bucket</i>										
25 ft. (7.60 m)							18,900 (8600)	18,900 (8600)		
20 ft. (6.10 m)							19,400 (8800)	19,400 (8800)		
15 ft. (4.57 m)			29,700 (13 500)	29,700 (13 500)	24,100 (10 900)	24,100 (10 900)	20,800 (9400)	19,600 (8900)	18,900 (8600)	14,500 (6600)
10 ft. (3.05 m)			35,500 (16 100)	35,500 (16 100)	27,200 (12 300)	25,500 (11 600)	22,500 (10 200)	18,700 (8500)	19,600 (8900)	14,000 (6400)
5 ft. (1.52 m)			39,900 (18 100)	33,800 (15 300)	29,900 (13 600)	24,000 (10 900)	24,100 (10 900)	17,800 (8100)	20,400 (9300)	13,500 (6100)
Ground Line			41,600 (18 900)	32,500 (14 700)	31,500 (14 300)	23,000 (10 400)	25,100 (11 400)	17,200 (7800)	20,800 (9100)	13,200 (6000)
-5 ft. (-1.52 m)	29,700 (13 500)	29,700 (13 500)	40,900 (18 600)	32,100 (14 600)	31,600 (14 300)	22,500 (10 200)	25,200 (11 400)	16,800 (7600)	20,300 (9200)	13,000 (5900)
-10 ft. (-3.05 m)	47,900 (21 700)	47,900 (21 700)	38,300 (17 400)	32,200 (14 600)	30,200 (13 700)	22,400 (10 200)	23,900 (10 800)	16,700 (7600)		
-15 ft. (-4.57 m)	41,300 (18 700)	41,300 (18 700)	33,700 (15 300)	32,700 (14 800)	26,700 (12 100)	22,700 (10 300)	20,300 (9200)	17,100 (7800)		
-20 ft. (-6.10 m)	31,300 (14 200)	31,300 (14 200)	25,900 (11 700)	25,900 (11 700)	19,600 (8900)	19,600 (8900)				

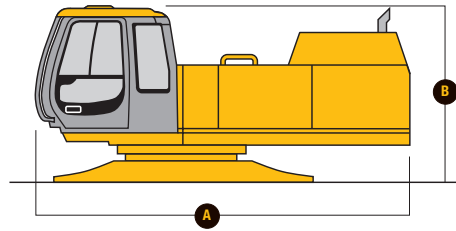
<i>With 13-ft. 5-in. (4.1 m) arm, 24-ft. 11-in. (7.6 m) boom, and 4,390-lb. (1990 kg) bucket</i>										
30 ft. (9.10 m)							13,200 (6000)	13,200 (6000)		
25 ft. (7.60 m)							17,200 (7800)	17,200 (7800)		
20 ft. (6.10 m)							18,000 (8200)	18,000 (8200)	15,200 (6900)	15,000 (6800)
15 ft. (4.57 m)					22,300 (10 100)	22,300 (10 100)	19,500 (8800)	19,500 (8800)	17,700 (8000)	14,600 (6600)
10 ft. (3.05 m)			33,000 (15 000)	33,000 (15 000)	25,600 (11 600)	25,600 (11 600)	21,300 (9700)	18,800 (8500)	18,600 (8400)	14,000 (6400)
5 ft. (1.52 m)			38,100 (17 300)	34,300 (15 600)	28,600 (13 000)	24,200 (11 000)	23,100 (10 500)	17,800 (8100)	19,600 (8900)	13,500 (6100)
Ground Line			40,800 (18 500)	32,500 (14 700)	30,700 (13 900)	23,000 (10 400)	24,500 (11 100)	17,100 (7800)	20,300 (9200)	13,000 (5900)
-5 ft. (-1.52 m)	31,800 (14 400)	31,800 (14 400)	41,100 (18 600)	31,800 (14 400)	31,400 (14 200)	22,200 (10 100)	25,000 (11 300)	16,500 (7500)	20,300 (9200)	12,700 (5800)
-10 ft. (-3.05 m)	49,500 (22 500)	49,500 (22 500)	39,400 (17 900)	31,600 (14 300)	30,700 (13 900)	22,000 (10 000)	24,300 (11 000)	16,300 (7400)	19,100 (8700)	12,700 (5800)
-15 ft. (-4.57 m)	45,300 (20 500)	45,300 (20 500)	35,700 (16 200)	32,000 (14 500)	28,100 (12 700)	22,200 (10 100)	21,900 (9900)	16,500 (7500)		
-20 ft. (-6.10 m)	36,400 (16 500)	36,400 (16 500)	29,200 (13 200)	29,200 (13 200)	22,700 (10 300)	22,700 (10 300)				

<i>With 17-ft. 1-in. (5.2 m) arm, 24-ft. 11-in. (7.6 m) boom, and 3,750-lb. (1700 kg) bucket</i>										
25 ft. (7.60 m)									13,800 (6300)	13,800 (6300)
20 ft. (6.10 m)									15,900 (7200)	15,900 (7200)
15 ft. (4.57 m)							18,200 (8300)	18,200 (8300)	16,800 (7600)	15,900 (7200)
10 ft. (3.05 m)			29,600 (13 400)	29,600 (13 400)	23,800 (10 800)	23,800 (10 800)	20,400 (9300)	20,200 (9200)	18,100 (8200)	15,300 (6900)
5 ft. (1.52 m)			35,600 (16 100)	35,600 (16 100)	27,400 (12 400)	25,800 (11 700)	22,500 (10 200)	19,100 (8700)	19,400 (8800)	14,600 (6600)
Ground Line			39,900 (18 100)	34,300 (15 600)	30,200 (13 700)	24,300 (11 000)	24,400 (11 100)	18,200 (8300)	20,500 (9300)	14,000 (6400)
-5 ft. (-1.52 m)	33,700 (15 300)	33,700 (15 300)	41,800 (19 000)	32,900 (14 900)	31,800 (14 400)	23,300 (10 600)	25,500 (11 600)	17,500 (7900)	21,100 (9600)	13,500 (6100)
-10 ft. (-3.05 m)	44,600 (20 200)	44,600 (20 200)	41,700 (18 900)	32,400 (14 700)	32,100 (14 600)	22,800 (10 300)	25,700 (11 700)	17,100 (7800)	20,900 (9500)	13,300 (6000)
-15 ft. (-4.57 m)	52,200 (23 700)	52,200 (23 700)	39,500 (17 900)	32,300 (14 700)	30 800 (14 000)	22,700 (10 300)	24,500 (11 100)	17,000 (7700)	19,400 (8800)	13,300 (6000)
-20 ft. (-6.10 m)	45,300 (20 500)	45,300 (20 500)	35,000 (15 900)	32,800 (14 900)	27,500 (12 500)	23,000 (10 400)	21,300 (9700)	17,300 (7800)		
-25 ft. (-7.60 m)	34,500 (15 600)	34,500 (15 600)	27,200 (12 300)	27,200 (12 300)	20,600 (9300)	20,600 (9300)				

<i>With 9-ft. 6-in. (2.9 m) ME arm, 21-ft. 8-in. (6.6 m) ME boom, and 5,860-lb. (2660 kg) bucket</i>										
25 ft. (7.60 m)					23,100 (10 500)	23,100 (10 500)				
20 ft. (6.10 m)					23,300 (10 600)	23,300 (10 600)				
15 ft. (4.57 m)					30,100 (13 700)	30,100 (13 700)	25,200 (11 400)	25,200 (11 400)	22,500 (10 200)	18,800 (8500)
10 ft. (3.05 m)					35,500 (16 100)	35,500 (16 100)	27,800 (12 600)	25,300 (11 500)	23,500 (10 700)	18,200 (8300)
5 ft. (1.52 m)					39,800 (18 100)	34,500 (15 600)	30,200 (13 700)	24,000 (10 900)	24,600 (11 200)	17,500 (7900)
Ground Line					41,500 (18 800)	33,200 (15 100)	31,400 (14 200)	23,100 (10 500)	24,900 (11 300)	17,000 (7700)
-5 ft. (-1.52 m)	52,700 (23 900)	52,700 (23 900)	40,300 (18 300)	32,700 (14 800)	30,900 (14 000)	22,700 (10 300)	23,700 (10 800)	16,800 (7600)		
-10 ft. (-3.05 m)	46,200 (21 000)	46,200 (21 000)	36,300 (16 500)	32,900 (14 900)	27,700 (12 600)	22,800 (10 300)				
-15 ft. (-4.57 m)	35,600 (16 100)	35,600 (16 100)	28,200 (12 800)	28,200 (12 800)						

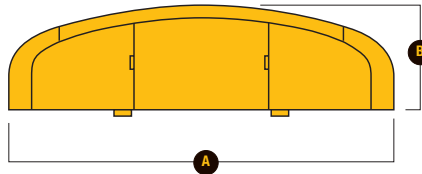
UPPERSTRUCTURE

- A** Overall length.....16 ft. 3 in. (4.95 m)
- B** Overall height.....8 ft. 5 in. (2.56 m)
- Overall width.....10 ft. 10 in. (3.29 m)
- Weight37,000 lb. (16 800 kg)



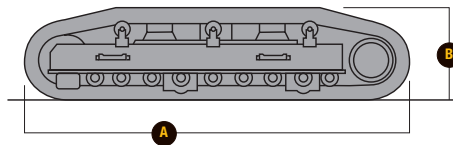
COUNTERWEIGHT

- A** Overall length.....10 ft. 4 in. (3.16 m)
- B** Overall depth.....2 ft. 7 in. (0.79 m)
- Overall height.....4 ft. 1 in. (1.25 m)
- Weight23,200 lb. (10 500 kg)



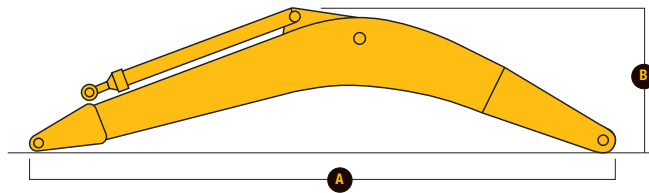
UNDERCARRIAGE

- | | <i>Shoe Width</i> | <i>Shoe Width</i> | <i>Shoe Width</i> |
|------------------------------|-----------------------|-----------------------|-----------------------|
| | 24 in. (600 mm) | 30 in. (750 mm) | 36 in. (900 mm) |
| A Overall length..... | 18 ft. 8 in. (5.68 m) | 18 ft. 8 in. (5.68 m) | 18 ft. 8 in. (5.68 m) |
| B Overall height..... | 4 ft. 4 in. (1.31 m) | 4 ft. 4 in. (1.31 m) | 4 ft. 4 in. (1.31 m) |
| Overall width..... | 2 ft. 2 in. (0.60 m) | 2 ft. 6 in. (0.75 m) | 3 ft. (0.90 m) |
| Weight..... | 17,900 lb. (8100 kg) | 18,700 lb. (8500 kg) | 19,600 lb. (8880 kg) |



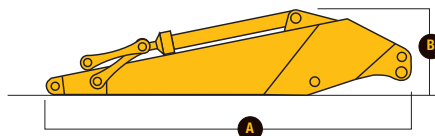
BOOM

- | | <i>Boom Length</i> | <i>Boom Length</i> | |
|------------------------------|-------------------------|------------------------|--|
| | 21 ft. 8 in. (6.6 m) ME | 24 ft. 11 in. (7.6 m) | |
| A Overall length..... | 22 ft. 7 in. (6.88 m) | 25 ft. 10 in. (7.88 m) | |
| B Overall height..... | 7 ft. 7 in. (2.32 m) | 6 ft. 8 in. (2.02 m) | |
| Overall width..... | 3 ft. 10 in. (1.18 m) | 3 ft. 10 in. (1.18 m) | |
| Weight..... | 11,600 lb. (5250 kg) | 11,600 lb. (5250 kg) | |



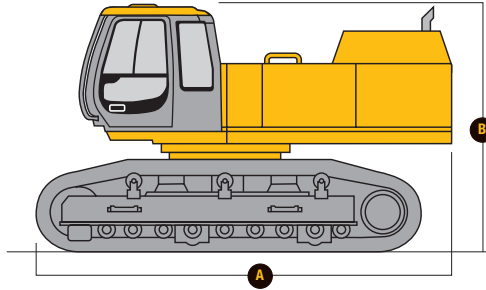
ARM

- | | <i>Arm Length</i> | <i>Arm Length</i> | <i>Arm Length</i> | <i>Arm Length</i> | <i>Arm Length</i> |
|------------------------------|------------------------|-----------------------|-----------------------|------------------------|-----------------------|
| | 9 ft. 6 in. (2.9 m) ME | 9 ft. 6 in. (2.9 m) | 11 ft. 6 in. (3.5 m) | 13 ft. 5 in. (4.1 m) | 17 ft. 1 in. (5.2 m) |
| A Overall length..... | 14 ft. 1 in. (4.29 m) | 14 ft. 1 in. (4.29 m) | 16 ft. (4.88 m) | 17 ft. 11 in. (5.45 m) | 21 ft. 5 in. (6.54 m) |
| B Overall height..... | 4 ft. 9 in. (1.44 m) | 4 ft. 9 in. (1.44 m) | 3 ft. 11 in. (1.20 m) | 3 ft. 11 in. (1.20 m) | 3 ft. 9 in. (1.14 m) |
| Overall width..... | 2 ft. 7 in. (0.79 m) | 2 ft. 7 in. (0.79 m) | 2 ft. 7 in. (0.79 m) | 2 ft. 7 in. (0.79 m) | 2 ft. 7 in. (0.79 m) |
| Weight..... | 7,080 lb. (3210 kg) | 6,970 lb. (3160 kg) | 6,550 lb. (2970 kg) | 7,100 lb. (3220 kg) | 6,860 lb. (3110 kg) |



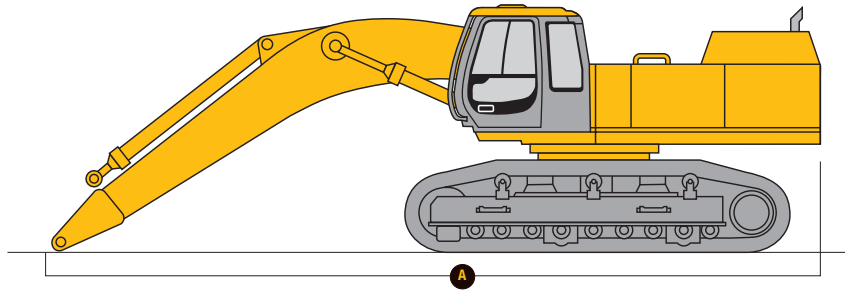
BASIC MACHINE (WITHOUT COUNTERWEIGHT)

	Shoe Width 24 in. (600 mm)	Shoe Width 30 in. (750 mm)	Shoe Width 36 in. (900 mm)
A Overall length.....	19 ft. 4 in. (5.90 m)	19 ft. 4 in. (5.90 m)	19 ft. 4 in. (5.90 m)
B Overall height.....	11 ft. 1 in. (3.39 m)	11 ft. 1 in. (3.39 m)	11 ft. 1 in. (3.39 m)
Overall width.....	11 ft. 1 in. (3.39 m)	11 ft. 4 in. (3.45 m)	11 ft. 10 in. (3.60 m)
Weight.....	72,800 lb. (33 000 kg)	74,500 lb. (33 800 kg)	76,300 lb. (34 600 kg)



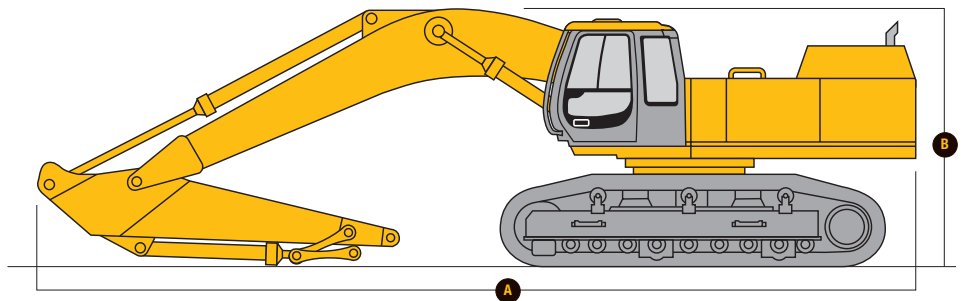
BASIC MACHINE (WITH BOOM)

	Boom Length 21 ft. 8 in. (6.6 m) ME	Boom Length 24 ft. 11 in. (7.6 m)
A Overall length.....	31 ft. 5 in. (9.57 m)	34 ft. 11 in. (10.63 m)



BASIC MACHINE (WITH BOOM AND ARM)

	Front 21-ft. 8-in. (6.6 m) ME boom and 9-ft. 6-in. (2.9 m) arm	Front 24-ft. 11-in. (7.6 m) boom and 11-ft. 6-in. (3.5 m) arm
A Overall length.....	37 ft. 1 in. (11.3 m)	39 ft. 9 in. (12.11 m)
B Overall height.....	14 ft. 4 in. (4.37 m)	11 ft. 10 in. (3.60 m)



BUCKETS

A full line of buckets is offered to meet a wide variety of applications. Digging forces are with power boost. The buckets have an adjustable bushing for side clearance, with the exception of the ditching bucket. Tooth selection includes either the John Deere Fanggs®, Standard, Tiger, Twin Tiger, Abrasion panel, or Flare teeth, or the ESCO (Vertalok) Standard, Tiger, Twin Tiger, or Flare teeth. Replaceable cutting edges are available through John Deere parts. Standard side cutters add 6 in. (150 mm) to bucket widths shown.

Type Bucket	Bucket Width		Bucket Capacity*		Weight		Arm Dig Force 9 ft. 6 in. (2.9 m)		Arm Dig Force 11 ft. 6 in. (3.5 m)		Arm Dig Force 13 ft. 6 in. (4.1 m)		Arm Dig Force 17 ft. 1 in. (5.2 m)		ME Arm Dig Force 9 ft. 6 in. (2.9 m)		Bucket Tip Radius		No. Teeth
	in.	mm	cu. yd.	m ³	lb.	kg	lb.	kN	lb.	kN	lb.	kN	lb.	kN	lb.	kN	in.	mm	
Heavy-Duty	36	914	1.70	1.30	4,960	2250							37,900	169					3
	36	914	1.97	1.51	5,454	2474	57,800	257	47,000	209	42,600	189					83.77	2128	3
	42	1067	2.07	1.58	5,714	2592							37,900	169					4
	42	1067	2.43	1.86	6,036	2738	57,800	257	47,000	209	42,600	189					83.77	2128	4
	48	1219	2.48	1.90	5,995	2719							37,900	169					4
	48	1219	2.90	2.22	6,482	2940	57,800	257	47,000	209	42,600	189					83.77	2128	4
	54	1372	2.87	2.19	6,296	2856							37,900	169					5
	54	1372	3.38	2.58	6,752	3063	57,800	257	47,000	209	42,600	189					83.77	2128	5
	60	1524	3.30	2.52	6,744	3059							37,900	169					5
	60	1524	3.86	2.95	7,121	3230	57,800	257	47,000	209	42,600	189					83.77	2128	5
	72	1829	4.10	3.13	7,391	3353							37,900	169					6
	72	1829	4.84	3.70	7,593	3444	57,800	257	47,000	209	42,600	189					83.77	2128	6
80	2032	5.49	4.20	8,260	3747	57,800	257	47,000	209	42,600	189					83.77	2128	6	
Heavy-Duty High-Capacity	36	914	2.36	1.80	5,868	2662	57,800	257	47,000	209	42,600	189					89.79	2281	3
	42	1067	2.90	2.22	6,314	2864	57,800	257	47,000	209	42,600	189					89.79	2281	4
	48	1219	3.47	2.65	6,534	2964	57,800	257	47,000	209	42,600	189					89.79	2281	4
	54	1372	4.04	3.09	6,892	3126	57,800	257	47,000	209	42,600	189					89.79	2281	5
	60	1524	4.63	3.54	7,273	3299	57,800	257	47,000	209	42,600	189					89.79	2281	5
	72	1829	5.80	4.43	7,914	3590	57,800	257	47,000	209	42,600	189					89.79	2281	6
	80	2032	6.60	5.05	8,626	3913	57,800	257	47,000	209	42,600	189					89.79	2281	6
	Extreme-Service	36	914	2.35	1.80	6,600	2994							57,100	254			89.79	2281
36		914	2.36	1.80	6,600	2994	57,800	257	47,000	209	42,600	189					89.79	2281	3
42		1067	2.90	2.22	7,150	3243							57,100	254			89.79	2281	4
42		1067	2.90	2.22	7,150	3243	57,800	257	47,000	209	42,600	189					89.79	2281	4
48		1219	3.50	2.68	7,480	3393							57,100	254			89.79	2281	4
48		1219	3.47	2.65	7,480	3393	57,800	257	47,000	209	42,600	189					89.79	2281	4
54		1372	4.00	3.06	7,810	3543							57,100	254			89.79	2281	5
54		1372	4.04	3.09	7,810	3543	57,800	257	47,000	209	42,600	189					89.79	2281	5
60		1524	4.62	3.53	8,360	3792							57,100	254			89.79	2281	5
60		1524	4.63	3.54	8,360	3792	57,800	257	47,000	209	42,600	189					89.79	2281	5
72		1829	4.84	3.70	8,690	3942							57,100	254			83.77	2128	6
72		1829	4.84	3.70	8,690	3942	57,800	257	47,000	209	42,600	189					83.77	2128	6
80		2032	5.50	4.21	9,460	4291							57,100	254			83.77	2128	6
80		2032	6.60	5.05	9,991	4532							57,100	254			89.79	2281	6

*All capacities are SAE heaped ratings.

BUCKET SELECTION CHART

Material (loose weight)	Heavy-Duty Bucket*		Recommended Bucket Size Heavy-Duty High-Capacity Bucket*		Extreme-Service Bucket*	
	cu. yd.	m ³	cu. yd.	m ³	cu. yd.	m ³
Wood chips – 700 lb./cu. yd. (318 kg/m ³).....	16.20	12.34	15.31	11.66	—	—
Peat, dry – 750 lb./cu. yd. (340 kg/m ³).....	13.50	10.29	12.79	9.74	—	—
Cinders – 950 lb./cu. yd. (431 kg/m ³).....	9.20	7.01	8.72	6.64	—	—
Peat, wet – 1,170 lb./cu. yd. (531 kg/m ³).....	8.25	6.29	7.79	5.94	—	—
Topsoil – 1,600 lb./cu. yd. (726 kg/m ³).....	6.03	4.59	5.69	4.34	—	—
Coal – 1,780 lb./cu. yd. (807 kg/m ³).....	5.40	4.11	5.12	3.90	4.59	3.50
Caliche – 2,100 lb./cu. yd. (953 kg/m ³).....	4.59	3.50	4.34	3.31	3.89	2.96
Earth, loam – 2,100 lb./cu. yd. (953 kg/m ³).....	3.83	2.92	3.62	2.76	3.24	2.47
Shale – 2,250 lb./cu. yd. (1021 kg/m ³).....	3.57	2.72	3.37	2.57	3.03	2.31
Sand, dry – 2,400 lb./cu. yd. (1089 kg/m ³).....	3.50	2.67	3.30	2.51	2.96	2.26
Clay, dry – 2,500 lb./cu. yd. (1134 kg/m ³).....	3.09	2.35	2.92	2.22	2.62	1.99
Earth, dry – 2,550 lb./cu. yd. (1157 kg/m ³).....	2.91	2.22	2.75	2.10	2.47	1.88
Limestone, broken or crushed – 2,600 lb./cu. yd. (1179 kg/m ³).....	3.09	2.35	2.92	2.22	2.62	2.00
Earth, wet – 2,700 lb./cu. yd. (1225 kg/m ³).....	2.75	2.10	2.60	1.98	2.33	1.77
Clay, wet – 2,800 lb./cu. yd. (1270 kg/m ³).....	3.45	2.63	3.25	2.48	2.92	2.22
Rock, granite, blasted and broken – 2,800 lb./cu. yd. (1270 kg/m ³).....	3.83	2.92	3.62	2.76	3.24	2.47
Sand, moist – 2,850 lb./cu. yd. (1293 kg/m ³).....	2.71	2.06	2.56	1.95	2.29	1.75
Sand and gravel, dry – 2,900 lb./cu. yd. (1315 kg/m ³).....	3.02	2.30	2.86	2.18	2.56	1.95
Sand, wet – 3,100 lb./cu. yd. (1406 kg/m ³).....	2.71	2.06	2.56	1.95	2.29	1.75
Sand and gravel, wet – 3,400 lb./cu. yd. (1542 kg/m ³).....	2.50	1.90	2.33	1.78	2.09	1.59

*Contact your John Deere dealer for optimum bucket and attachment selections. These recommendations are for a standard-configuration 550LC, 11-ft. 6-in. (3.5 m) arm in general and average conditions using average bucket weights for heavy-duty, heavy-duty high-capacity, and extreme-service buckets. Larger buckets may be possible for lighter buckets, flat and level operations, less compacted materials, and volume-loading applications. Smaller buckets are recommended for adverse conditions such as off-level applications and uneven surfaces. Bucket capacity indicated is SAE heaped.

	550LC		550LC		550LC
ENGINE					
Auto-idle system	●	Vandal locks (with ignition key)	●	Horn, electric on left control lever	●
Automatic belt tension device	●	Cab door	●	Hourmeter, electric	●
Batteries (two 12-volt), 280-min. (890 CCA) reserve capacity	●	Engine hood	●	Hydraulic shutoff lever, all controls	●
Coolant recovery tank	●	Fuel cap	●	Hydraulic warm-up control	●
Dual-element dry-type air filter	●	Hydraulic reservoir cap	●	Interior light	●
Electric ether starting aid	●	Service doors	●	Mode selectors (illuminated)	●
Electric fuel shutoff	●	Toolbox	●	Power modes – four	●
Enclosed fan guard (conforms to SAE J1308)	●			Travel modes – two	●
Engine coolant to -34°F (-37°C)	●	FRONT ATTACHMENTS		Work modes – four	●
Fuel filter with water separator	●	General-purpose boom, 24 ft. 11 in. (7.6 m)	■	Monitor system with alarm features	●
Full-flow oil filter	●	Mass-excavating boom, 21 ft. 8 in. (6.6 m)	■	Auto-idle indicator light	●
Isolation-mounted engine	●	Arm, 9 ft. 6 in. (2.9 m)	■	Engine air cleaner restriction indicator light	●
Vertical spin-on fuel filter	●	Arm, 11 ft. 6 in. (3.5 m)	■	Engine coolant temperature indicator light with audible alarm	●
Oil-to-coolant engine oil cooler	●	Arm, 13 ft. 5 in. (4.1 m)	■	Engine oil pressure indicator light with audible alarm	●
Radiator trash screen	●	Arm, 17 ft. 1 in. (5.2 m)	■	Fluid level	●
Turbocharger water cooler	●	Mass-excavating arm, 9 ft. 6 in. (2.9 m)	■	Engine coolant level indicator light	●
Underhood muffler with vertical curved-end exhaust stack	●	Less boom and arm	●	Engine oil level indicator light	●
Engine coolant heater	■	Boom cylinder with plumbing to mainframe for less boom and arm	●	Hydraulic oil level indicator light	●
		Buckets		Low alternator charge indicator light	●
		Heavy-duty with sidecutters		Low fuel indicator light	●
		Extreme-service with sidecutters		Motion alarm with cancel switch (conforms to SAE J994)	●
HYDRAULIC SYSTEM		Slide-Loc hydraulic coupler	■	Power boost switch on right control lever	●
Hydraulic power boost	●	Mechanical coupler with pins	●	Propel pedals and levers	●
Reduced-drift valve for boom down, arm in	●	Bucket-to-arm clearance adjustment bushing (except ditching buckets)	●	Protection screens for cab front, rear, and side	●
Spring-applied, hydraulically released automatic swing brake	●	Centralized lubrication system	●	Seat belt, 2 in. (51 mm), retractable	●
Auxiliary hydraulic and electric pilot controls	■	Dirt seals on all bucket pins	■	Seat belt, 3 in. (76 mm), retractable	■
Load-lowering control device	■			Sound suppression	●
		OPERATOR'S STATION		Tinted glass	●
UNDERCARRIAGE		Adjustable seat with independent control positions (levers-to-seat, seat-to-pedals)	●	Window vandal-protection covers	●
Triple semi-grouser shoes, 36 in. (900 mm)	●	Air conditioning	■	24- to 12-volt D.C. converters	■
Triple semi-grouser shoes, 24 in. (600 mm)	■	AM/FM stereo	■		
Triple semi-grouser shoes, 30 in. (750 mm)	●	Coat hook	●	ELECTRICAL	
Planetary drive	●	Deluxe-suspension cloth seat with adjustable armrests	●	Blade-type multi-fused circuits	●
Propel motor shields	●	Front windshield wiper with intermittent speeds	●	Bypass-safety cover	●
Track guides, front idler, center and rear	●	Floor mat	●	Positive-terminal battery covers	●
Two-speed propel	●	Gauges (illuminated)			
Upper carrier rollers (3)	●	Engine coolant	●	LIGHTS	
		Fuel	●	Halogen work lights, 33,000 candlepower (375,757 lux)	●
UPPERSTRUCTURE		Heater, 20,000 Btu/hr. (5.9 kW) with blower fan	●	One mounted on boom	●
Counterweight, 23,200 lb. (10 500 kg)	●	Hinged roof panel	●	One mounted on frame	●
Right- and left-hand mirrors	●				
Toolbox	●				

KEY: ● Standard equipment ■ Optional or special equipment

See your John Deere dealer for further information.

CONTROL OWNING AND OPERATING COSTS

Total Repair Cost Management (TRCM) is part of John Deere's proactive, fix-before-fail strategy on machine maintenance that will help control costs, increase profits, and reduce stress. Included in this comprehensive lineup of ongoing programs and services are:

OilScan® Plus program – tells you what's going on inside *all* of your machine's major components so you'll know if there's a problem *before* you see a decline in performance. OilScan Plus oil analysis is included in most SECURE®-Extended warranty and preventive-maintenance agreements.

Component life-cycle data – gives you vital information on the projected life span of components and lets you make informed decisions on machine maintenance by telling you approximately how many hours of use you can expect from an engine, transmission, or hydraulic pump. This information can be used to preempt catastrophic downtime by servicing major components at about 80 percent of their life cycle.

Preventive Maintenance (PM) agreements – give you a fixed cost for maintaining a machine for a given period of time. They also help you avoid

downtime by ensuring that critical maintenance work gets done right and on schedule. On-site preventive maintenance service performed where and when you need it helps protect you from the expense of catastrophic failures and lets you avoid waste-disposal hassles.

SECURE-Extended warranty – gives you a fixed cost for machine repairs for a given period of time so you can effectively manage costs. Whether you work in a severe-service setting or just want to spread the risk of doing business, this is a great way to custom-fit coverage for your operation. And a SECURE-Extended contract also travels well because it's backed by John Deere and is honored by *all* Deere construction dealers.

Customer Support Advisors (CSAs) – Deere believes the CSA program lends a *personal* quality to Total Repair Cost Management. Certified CSAs have the knowledge and skills for helping make important decisions on machine maintenance and repair. Their mission is to help you implement a plan that's right for *your* business and take the burden of machine maintenance off your shoulders.



Net engine power is with standard equipment including air cleaner, exhaust system, alternator, and cooling fan, at standard conditions per SAE J1349 and DIN 6270B, using No. 2-D fuel at 35 API gravity. No derating is required up to 10,000 ft. (3050 m) altitude. Gross power is without cooling fan.

Specifications and design subject to change without notice. Wherever applicable, specifications are in accordance with PCSA and SAE standards. Except where otherwise noted, these specifications are based on unit with full fuel tank and 175-lb. (79 kg) operator.

