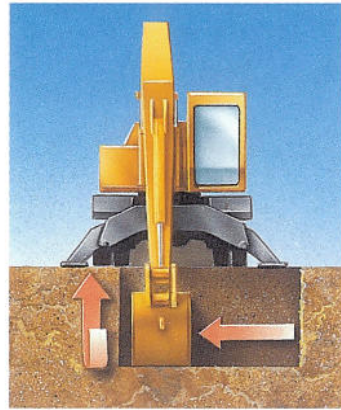


# 595D

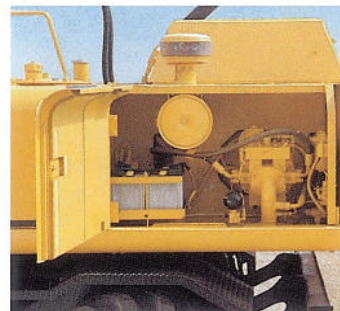




The sophisticated hydraulic system is the brains behind combined-hydraulic-function-capability (C-H-F-C) – its automatic load-sensing system. C-H-F-C lets the 595D propel and swing the boom simultaneously without stuttering or mistracking.



The open-center hydraulic system automatically adjusts to meet job demands. Mode selector also lets you fine-tune performance to save fuel.



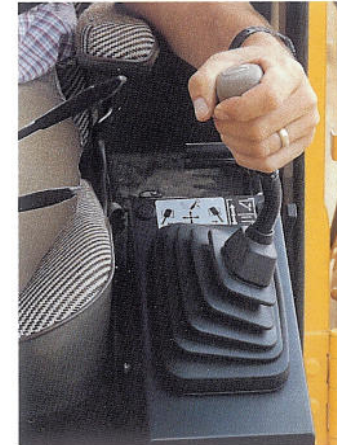
Easy to get to. Large, reinforced doors swing wide for easy access to all components and fill-points. Easy-to-read sight gauges let you check hydraulic fluid and fuel levels from the ground. Lock cab and service areas with ignition key.

Choose from two all-welded, stress relieved undercarriages. One has independent front and rear stabilizers – the other comes with front stabilizers and a rear blade.

The right rubber for every job. Choose dual 10.00x20.0 tires for working on hard surfaces. Single 18.00x19.5 tires give better floatation, traction, and mobility in rough terrain.



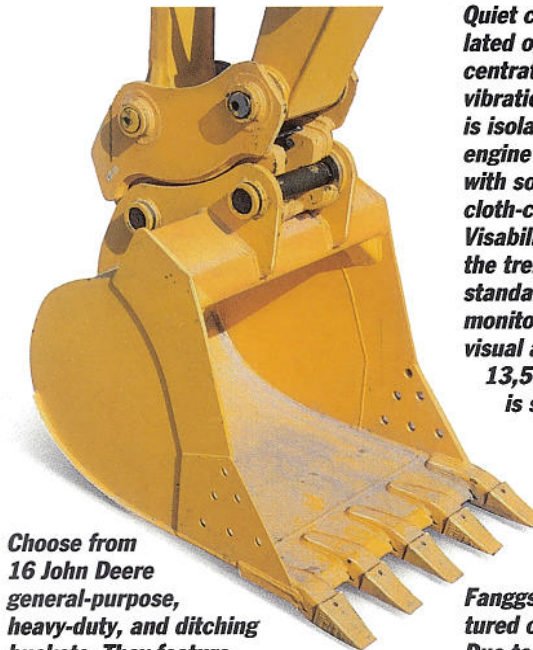
The 595D roads like no other excavator. The two-speed hydrostatic system provides all-wheel drive in low and a top speed of 18.6 mph (30 km/h) in high. The air-over-hydraulic brake system features expanding shoes at all corners to assure smooth confident stops in all kinds of terrain.



Convenient, low-effort controls give you precise, smooth operation. To save fuel, engine speed is reduced to 1,400 rpm when a hydraulic function is not used for four seconds.



Quiet comfort. The roomy, well-ventilated operator station lets you concentrate on the job at hand. Fatiguing vibration is reduced because the cab is isolation-mounted. Both cab and engine compartments are also lined with sound-deadening insulation. The cloth-covered seat is fully adjustable. Visibility is excellent – especially to the trench. Dual rear-view mirrors are standard. Vital machine functions are monitored electronically with both visual and electronic alarms. A large 13,500 Btu/hr (4.1 kW) heater is standard.



Choose from 16 John Deere general-purpose, heavy-duty, and ditching buckets. They feature heavy-duty reinforced beams, T-1 steel sidecutters, two-piece moldboard, and heavy-duty wear strips.

Fanggs® teeth are featured on every bucket. Due to their unique profile, Fanggs teeth dig with 23 percent less effort for faster bucket fill and better bucket control.



The standard auxiliary valve and circuit let you install attachments fast.

Front axle oscillates 12 degrees for smooth moves in rough terrain. A hydraulic lock secures the axle for solid footing when digging.

| ENGINE                    |   | 595D |
|---------------------------|---|------|
| Type                      | John Deere 4276T with altitude-compensating turbocharger      |      |
| Rated power               |   |      |
| Dig mode                  | 95 SAE net hp (71 kW) / 100 SAE gross hp (75 kW) @ 2,100 rpm  |      |
| Travel mode               | 100 SAE net hp (75 kW) / 105 SAE gross hp (78 kW) @ 2,300 rpm |      |
| Cylinders                 | 4   |      |
| Displacement              | 276 cu. in. (4.524 L)   |      |
| Maximum net torque        | 284 lb.-ft. (385 Nm) @ 1,300 rpm                              |      |
| Fuel consumption, typical | 2 to 3 gal./hr. (7.5 to 11.5 L/h)                             |      |
| Cooling fan               | suction type  |      |
| Electrical system         | 24 volt with 42-amp alternator                                |      |
| Batteries (two 12 volt)   | reserve capacity: 180 min.                                    |      |

| HYDRAULIC SYSTEM          |  |
|---------------------------|--|
| Main pumps                | 2 variable-displacement axial-piston open center |
| Maximum rated flow        | 2 x 44.1 gpm (2 x 167 L/min.)                    |
| Pressure setting          | 4,620 psi (31 860 kPa)                           |
| Pilot pump                | one gear   |
| Maximum rated flow        | 6.6 gpm (25 L/min.)                              |
| Pressure setting          | 570 psi (3930 kPa)                               |
| Steering pump             | one gear   |
| Maximum rated flow        | 7.93 gpm (30.0 L/min.)                           |
| Pressure setting          | 1,778 psi (12 260 kPa)                           |
| System operating pressure |  |
| Travel circuits           | 4,620 psi (31 860 kPa)                           |
| Front-end circuits        | 4,050 psi (27 920 kPa)                           |
| Circuit relief valves     |  |
| Boom circuits             | 4,270 psi (29 440 kPa)                           |
| Arm circuits              | 4,270 psi (29 440 kPa)                           |
| Bucket circuits           | 4,270 psi (29 440 kPa)                           |
| Stabilizer circuits       | 4,050 psi (27 920 kPa)                           |
| Cross-over relief valves  |  |
| Travel circuits           | 4,690 psi (32 340 kPa)                           |
| Swing circuits            | 3,560 psi (24 540 kPa)                           |

| STEERING   |                       |
|--|-----------------------|
| Minimum turning radius with 10 ft. 2 in. (3.1 m) arm | 23 ft. 7 in. (7.14 m) |

| SWING MECHANISM |            |
|-----------------|------------|
| Swing speed     | 0-14.5 rpm |

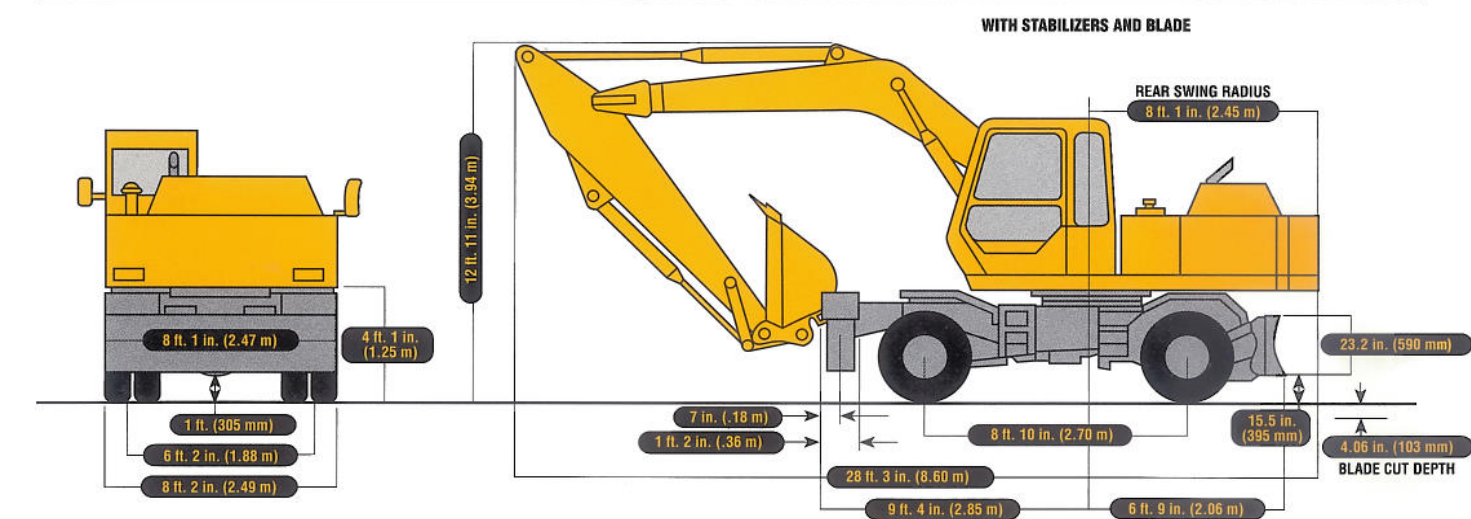
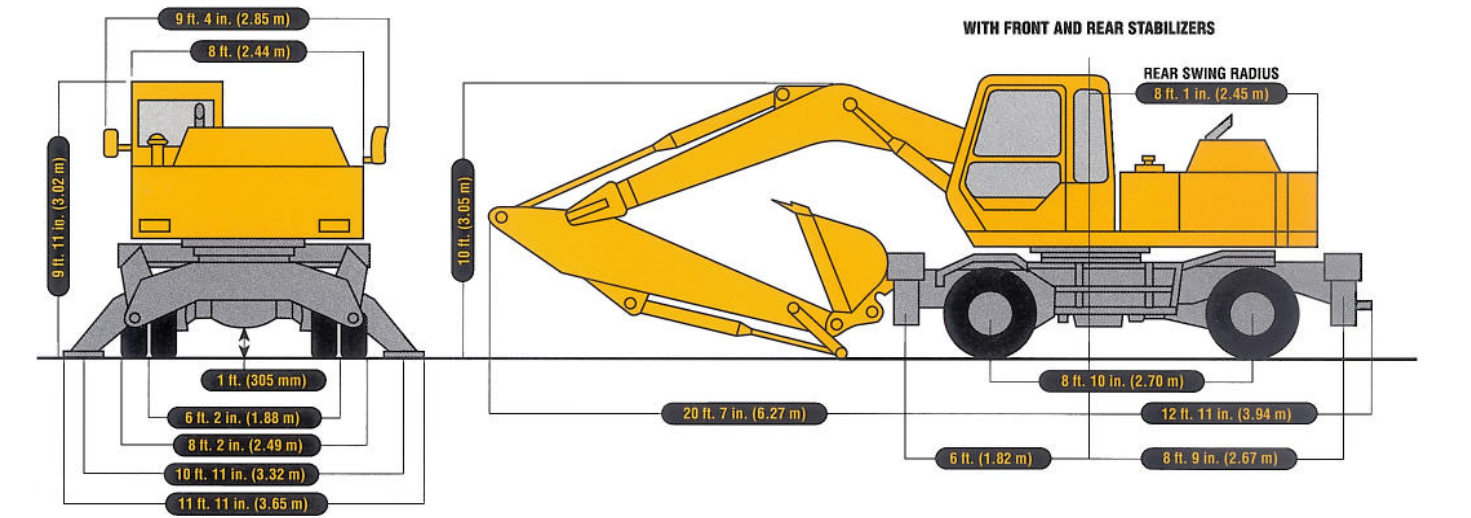
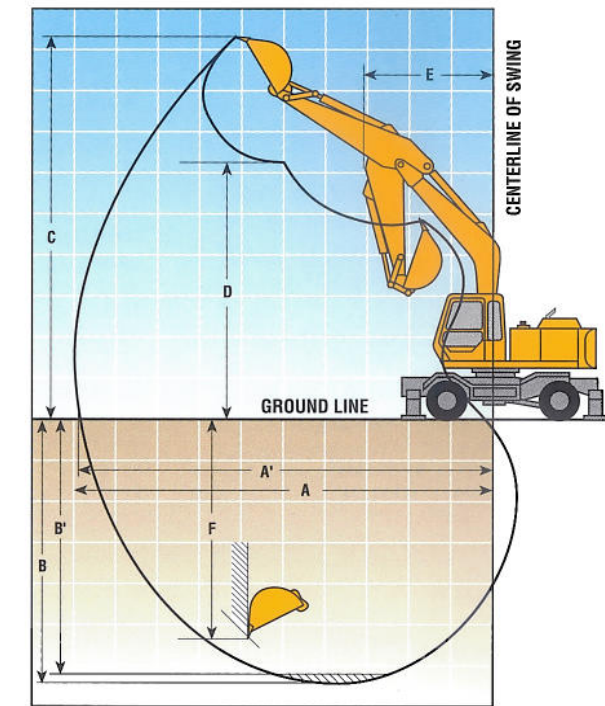
| UNDERCARRIAGE          |  |
|------------------------|--|
| Drive system           |  |
| Low-speed range        | all-wheel drive                              |
| High-speed range       | rear-wheel drive                             |
| Transmission           | constant mesh with low- and high-speed range |
| Front axle oscillation | 12.4 deg.                                    |
| Travel speed           |  |
| Low                    | 0-5.6 mph (0-9.0 km/h)                       |
| High                   | 0-18.6 mph (0-30.0 km/h)                     |
| Maximum traction force |  |
| Low                    | 19,800 lb. (88.1 kN) (9000 kg)               |
| High                   | 5,950 lb. (26.5 kN) (2700 kg)                |
| Tractive gradability   | 65% (33 deg.)                                |

| CAPACITIES                           |                   |
|--------------------------------------|-------------------|
| Fuel tank                            | 66.1 gal. (250 L) |
| Cooling system                       | 5.5 gal. (21 L)   |
| Engine lubrication, including filter | 3.5 gal. (13 L)   |
| Transmission                         | 1.7 gal. (6.3 L)  |
| Axle case                            |                   |
| Front                                | 1.85 gal. (7 L)   |
| Rear                                 | 2.9 gal. (11 L)   |
| Wheel gear reduction (each)          | 0.61 gal. (2.3 L) |
| Hydraulic system                     | 52.9 gal. (200 L) |
| Hydraulic tank                       | 34.4 gal. (130 L) |
| Swing drive                          | 1.3 gal. (5 L)    |

| OPERATING WEIGHTS  |                        |
|--|------------------------|
| With full fuel tank; 175-lb. (79 kg) operator; 10.00-20.0, 14 PR dual tires; 10 ft. 2 in. (3.1 m) arm; 0.75-cu. yd. (0.57 m <sup>3</sup> ) bucket; and fenders |                        |
| With blade and two stabilizers   | 36,222 lb. (16 430 kg) |
| Front axle   | 16,469 lb. (7470 kg)   |
| Rear axle  | 19,754 lb. (8960 kg)   |
| With four stabilizers  | 36,575 lb. (16 590 kg) |
| Front axle   | 16,888 lb. (7660 kg)   |
| Rear axle  | 19,688 lb. (8930 kg)   |

| COMPONENT WEIGHTS  |  | 595D                 |
|--|--|----------------------|
| Upperstructure with full fuel tank and 5,510-lb. (2500 kg) main counterweight (less front attachments) |  | 15,543 lb. (7050 kg) |
| Undercarriage equipped with  |  |                      |
| Blade, two stabilizers, and tires  |  | 14,440 lb. (6550 kg) |
| Four stabilizers and tires   |  | 14,795 lb. (6710 kg) |
| Tires  |  |                      |
| 10.00-20.0, 14 PR dual (8)   |  | 1,733 lb. (786 kg)   |
| 18.00-19.5, 18 PR single (4)   |  | 1,420 (644 kg)       |
| One-piece boom (with arm and boom cylinders)   |  | 3,485 lb. (1581 kg)  |
| Arm with bucket cylinder and linkage   |  |                      |
| 10 ft. 2 in. (3.1 m)   |  | 1,808 lb. (820 kg)   |
| Boom lift cylinders (2) total weight with linkage  |  | 705 lb. (320 kg)     |
| Main counterweight   |  | 5,510 lb. (2500 kg)  |

| OPERATING INFORMATION |  |                        |
|-----------------------|--|------------------------|
|                       | Arm Length   |                        |
|                       | 10 ft. 2 in. (3.1 m)                               |                        |
| A                     | Maximum reach                                      | 31 ft. 4 in. (9.56 m)  |
| A'                    | Maximum reach @ ground level                       | 30 ft. 8 in. (9.35 m)  |
| B                     | Maximum digging depth                              | 20 ft. 8 in. (6.3 m)   |
| B'                    | Maximum digging depth @ 8-ft. (2.44 m) flat bottom | 20 ft. 0 in. (6.09 m)  |
| C                     | Maximum cutting height                             | 29 ft. 8 in. (9.03 m)  |
| D                     | Maximum dumping height                             | 20 ft. 7 in. (6.28 m)  |
| E                     | Minimum swing radius                               | 10 ft. 3 in. (3.13 m)  |
| F                     | Maximum vertical wall                              | 17 ft. 11 in. (5.46 m) |
| G                     | Tail swing radius                                  | 8 ft. 1 in. (2.45 m)   |





|  | 595D |   | 595D |   | 595D |
|--|------|---|------|---|------|
| <b>ENGINE</b>  |      | Right front mirror                              | ●    | Axle lock indicator light                                     | ●    |
| Auto-idle system   | ●    | Vandal locks with ignition key                  | ●    | Engine air cleaner restriction indicator light                | ●    |
| Batteries (two 12 volt), 180-min. (1,250 CCA) reserve capacity       | ●    | Cab door  | ●    | Engine coolant temperature indicator light with audible alarm | ●    |
| Dual element dry-type air filter                                     | ●    | Fuel cap  | ●    | Engine oil pressure indicator light with audible alarm        | ●    |
| Electric ether starting aid  | ●    | Service doors                                   | ●    | Fluid level   | ●    |
| Enclosed fan guard   | ●    |   |      | Engine coolant level indicator light                          | ●    |
| Conforms to SAE J1308  | ●    | <b>FRONT ATTACHMENTS</b>                        |      | Hydraulic oil level indicator light                           | ●    |
| Engine coolant to -34°F (-37°C)                                      | ●    | Arm, 10 ft. 2 in. (3.1 m)                       | ●    | Hazard indicator light  | ●    |
| Full-flow oil filter   | ●    | Bucket-to-arm clearance adjustable bushing      | ●    | High beam indicator light                                     | ●    |
| Isolation mounted  | ●    | Centralized lubrication system                  | ●    | Low alternator charge indicator light                         | ●    |
| John Deere quick release fuel filter                                 | ●    | Dirt seals on all bucket pins                   | ●    | Low fuel indicator light                                      | ●    |
| Radiator trash screen  | ●    | Boom and cylinders with plumbing to mainframe   | ●    | Park brake indicator light                                    | ●    |
| Underhood muffler with vertical curved end exhaust stack             | ●    | Buckets   | ●    | Service brake indicator light                                 | ●    |
|  |      | General purpose                                 | ●    | Turn indicator lights   | ●    |
|  |      | Heavy duty                                      | ●    | Work-lights-on indicator light                                | ●    |
|  |      | High capacity                                   | ●    | Motion alarm with cancel switch                               | ●    |
|  |      | Side cutters and teeth                          | ●    | Conforms to SAE J994  | ●    |
| <b>HYDRAULIC SYSTEM</b>  |      | No-boom-arm option                              | ■    | Seat belt, 2 in. (51 mm)                                      | ●    |
| Auxiliary hydraulic valve section with foot control                  | ●    |   |      | Throttle  | ●    |
| Hydraulic filter restriction indicator kit                           | ■    | <b>OPERATOR'S STATION</b>                       |      | Positive-position hand control                                | ●    |
|  |      | Clock   | ●    | Foot control  | ●    |
|  |      | Deluxe cloth seat with adjustable armrests      | ●    | Tinted glass  | ●    |
|  |      | Front windshield wiper and washer               | ●    | Defroster fan   | ■    |
|  |      | Constant speed                                  | ●    | Window vandal protection covers                               | ■    |
|  |      | Gauges (illuminated)                            | ●    | 24- to 12-volt D.C. radio convertors                          | ■    |
|  |      | Air pressure                                    | ●    |   |      |
|  |      | Engine coolant                                  | ●    | <b>ELECTRICAL</b>   |      |
|  |      | Fuel  | ●    | By-pass start safety cover on starter                         | ●    |
|  |      | Heater, 13,500 Btu/hr (4.1 kW) with blower fan  | ●    | Glass fuses   | ●    |
|  |      | Heater, 20,000 Btu/hr (5.9 kW)                  | ■    | Positive terminal battery covers                              | ●    |
|  |      | Horn, electric                                  | ●    |   |      |
|  |      | Hourmeter, electric                             | ●    | <b>LIGHTS</b>   |      |
|  |      | Interior light                                  | ●    | Park lights   | ●    |
|  |      | Mode selectors                                  | ■    | Taillights  | ●    |
|  |      | Power modes - three                             | ●    | Work lights   | ●    |
|  |      | Travel modes - two                              | ●    | Halogen   | ●    |
|  |      | Monitor system with alarm features              | ●    | One mounted on boom   | ●    |
|  |      | Air pressure indicator light with audible alarm | ●    | Two mounted on frame  | ●    |
|  |      | Auto-idle indicator light                       | ●    |   |      |
|  |      |   |      |   |      |
| <b>UNDERCARRIAGE</b>   |      |   |      |   |      |
| Axle, oscillating front with locking hydraulic cylinders             | ●    |   |      |   |      |
| Hydrostatic propel system with high-low range transmission           | ●    |   |      |   |      |
| Parking brake, spring applied, air released                          | ●    |   |      |   |      |
| Service brakes, air-over-hydraulic internal expanding shoes          | ●    |   |      |   |      |
| Stabilizers  | ●    |   |      |   |      |
| Four, less blade   | ●    |   |      |   |      |
| Two, with blade  | ●    |   |      |   |      |
| Tires  | ●    |   |      |   |      |
| 10.00-20, 14 PR dual (8)   | ●    |   |      |   |      |
| 18.00-19.5, 18 PR single (4)   | ●    |   |      |   |      |
| <b>UPPERSTRUCTURE</b>  |      |   |      |   |      |
| Air compressor, 100 psi (690 kPa), 15 CFM (700 m <sup>3</sup> /sec.) | ●    |   |      |   |      |
| Fully-enclosed swing gears   | ●    |   |      |   |      |
| Right- and left-hand mirrors   | ●    |   |      |   |      |

**KEY:** ● Standard equipment ■ Optional or special equipment

See your John Deere dealer for further information.

## THE JDAdvantEDGE

JDAdvantEdge is a wealth of support programs, parts systems, and dealer resources, all designed to give you the edge. This package of special benefits is a major reason why John Deere offers the "best value" for your equipment dollar.

**Best parts support** - Twelve regional parts depots in North America and others around the world put parts support near your job no matter where in the world it is.

A computerized FLASH™ parts locating system linking these depots to dealerships can find out-of-stock parts in a hurry and get them into your hands fast. Usually within 24 hours.

**Best service backup** - Dealer service technicians are regularly schooled, at our modern facility in Davenport, Iowa, or by professionals in the field, to diagnose quickly and repair efficiently.

If they're stumped, a phone call to DTAC (Dealer Technical Assistance Center) puts them in touch with a staff of pros at the factory who help them find a solution quickly.

**Best dealers** - Your John Deere dealer is an important contributor to the JDAdvantEdge. He or she is committed to being the best equipment supplier you can work with.

This is a dollars-and-cents commitment in parts inventory, in service facilities, in field-service trucks. It's a sweat-and-blood commitment in dedicated, skilled, and highly trained and motivated personnel in each and every department at the dealership.

But what sets John Deere dealers apart from all the rest is something more, a factor somewhat difficult to measure ... a caring attitude, and a sincere desire to be the best at meeting the needs of each individual customer.

**John Deere Finance Plans** - Whether you rent, lease, or buy John Deere equipment, your dealer can explain the John Deere options available. One-stop options that let you free up operating capital, keep other lines of credit open. More solid benefits of the JDAdvantEdge.

**Best protection** - In addition to the new equipment warranty that meets or exceeds the competition, SECURE® extended coverage, an optional service product for John Deere equipment, is available for repair coverage after the warranty concludes. Full machine or power train coverage is available for a variety of time periods to meet your needs. Consult your dealer for availability and details.



Net engine power is with standard equipment including air cleaner, exhaust system, alternator, and cooling fan, at standard conditions per SAE J1349 and DIN 70 020, using No. 2-D fuel at 35 API gravity. No derating is required up to 10,000 ft. (3050 m) altitude. Gross power is without cooling fan.

Specifications and design subject to change without notice. Wherever applicable, specifications are in accordance with PCSA and SAE standards. Except where otherwise noted, these specifications are based on a unit with full fuel tank, 175-lb. (79 kg) operator, and standard equipment.

