

Service



I'M MORE THAN AN EXPERT IN MY FIELD.
I'M AN EXPERT IN YOURS.

When you bring your machine to our John Deere service bay, you'll get a lot more than routine maintenance. You'll get exactly what you need to get back to the field. As a John Deere certified technician, I am continually trained to provide expert service specific to your machine. Because I know while every machine is different, the end result should always be the same – uptime. That's the John Deere difference. See us today.



JOHN DEERE REMAN

SAME-AS-NEW PARTS PERFORMANCE AT A FRACTION OF THE COST.



www.johndeere.com

DSP42317 Litho in U.S.A. (08-11)



www.JohnDeere.com/Reman

It's not "rebuilt." It's not "repaired" or even "used." It's your machine reborn.

It's a fact of life in the field. An important part breaks down or wears out. You need to replace it fast. Should you get a brand new part or should you get a remanufactured part with like-new performance and spend a lot less?

With input costs continuing to rise, it pays to look into John Deere Reman. You'll find all the vital parts you need to get back in the field quickly and economically — remanufactured engines, engine components, hydraulics, drive-train, and fuel system and electronic components.

Don't be confused with the term. The distinction is critical. A "rebuilt" part is disassembled only to the point of failure, then rebuilt using the same, new or aftermarket part. A "repaired" part has no remanufacturing process at all; only the defective parts are examined and

replaced. A "restored" product is brought back to its original condition, but the changes are only cosmetic. A "remanufactured" part is far different — no "used" parts are involved at all. A "used" product is one that has not been repaired and therefore has no guarantees with its performance.

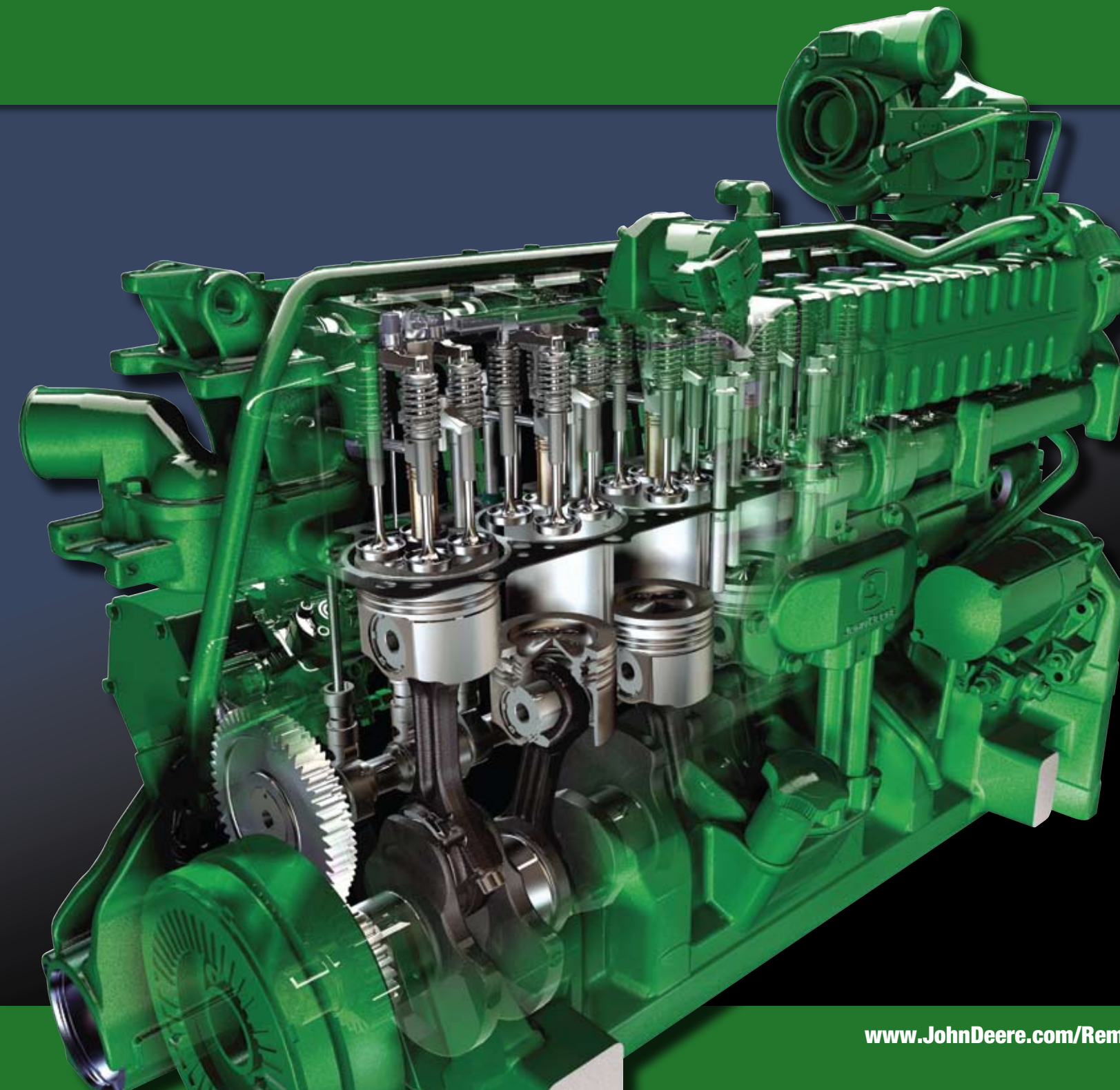
With John Deere Reman, you know exactly what you're getting: parts and components that deliver same-as-new performance, but at prices you'll find incredible. We completely disassemble the product, thoroughly clean each part, inspect for any cracks with the Magna-Glo process, then assemble using the same processes when it was produced new to meet or exceed the latest OEM specifications. For details of the process, see pages 6-7. But first, turn the page to check all the advantages.

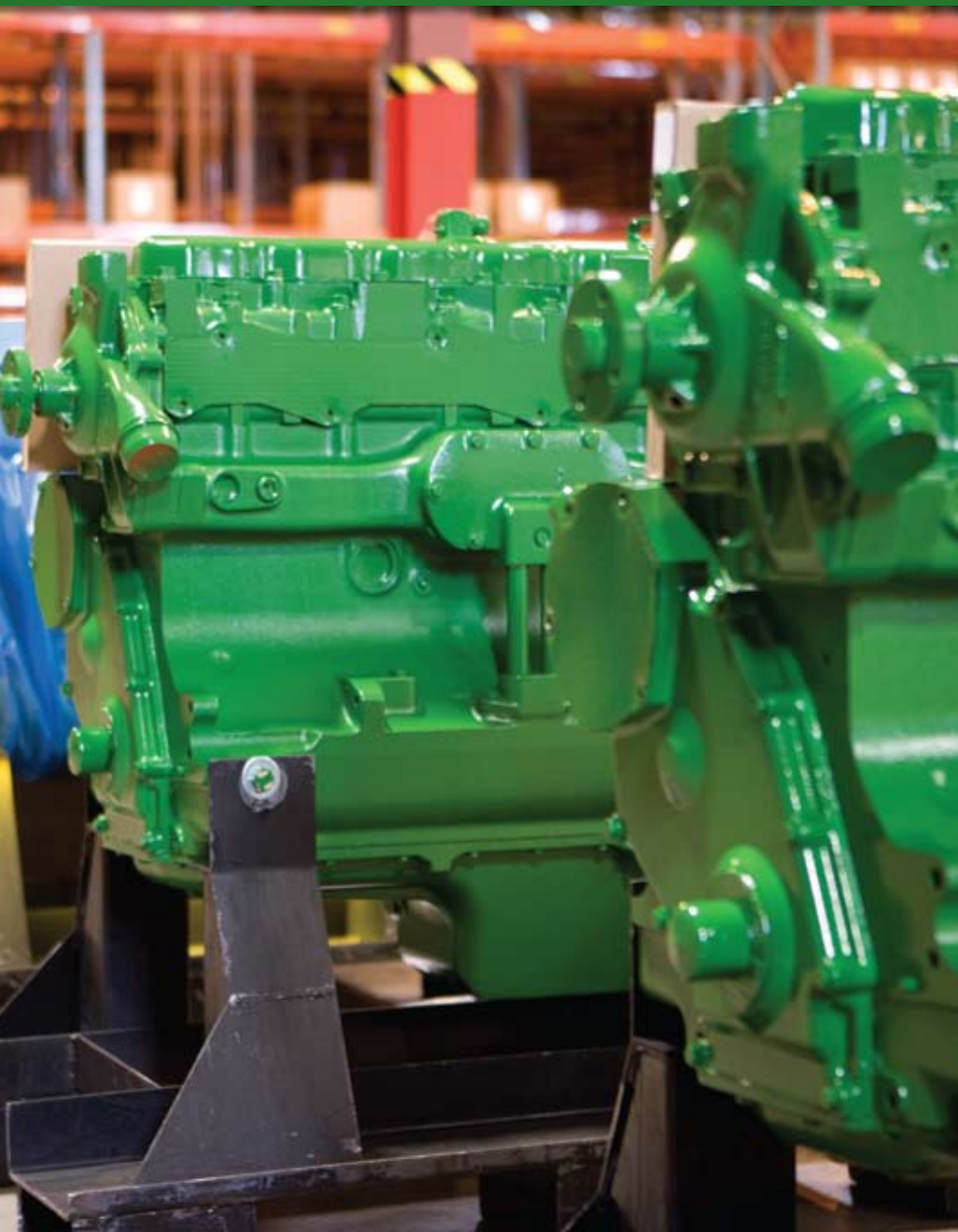
More than just engines.

When we say, "It's your machine reborn," we mean all your tractor's vital parts and components. Choose from the following to get same-as-new performance with John Deere Reman:

- Engines
- Engine components
- Fuel injection system
- Hydraulics
- Drive-train components
- Electrical components
- Electronic components

(See pages 8-9 for a complete list.)





Is it new or is it John Deere Reman?

Reman works like new.

You're looking at the highest quality remanufactured parts and components available on the market: John Deere Reman products. Their reliability and performance are so much like new, you probably couldn't tell them apart. That's because they're manufactured to stringent John Deere standards and produced to original John Deere specifications. Rest assured, they're designed by our engineers and built by our certified technicians — using only 100% John Deere parts in a John Deere-approved manufacturing process with the latest design and performance improvement updates. Plus, an authorized John Deere dealer can even install your Reman parts if you'd like.

It's 60 to 70% the cost of new.

Talk about savings. You'll get like-new performance at only a fraction of the price, making John Deere Reman the ultimate low-cost repair alternative. The results are easy to see: greatly reduced downtime (as much as 50% compared to an in-house or outside repair), decreased risks and greater value for your dollar. And when compared to other engine repair options, the price is very competitive.

It's warranted like new.

All John Deere Reman parts are guaranteed with a two-year, 2,000-hour warranty — a warranty that's just as good if not better than brand-new parts and components. Our warranty covers both parts and labor if dealer installed.

It's tested like new.

All John Deere Reman engines and fuel pumps, for example, must pass the same dynamometer test we use for our new engines and fuel pumps. You can rest assured they meet all current John Deere specifications. One hundred percent of all Reman components are designed and built to meet or exceed all John Deere quality standards.

John Deere certified technicians pressure-test each fuel pump to check for possible leaks and cracks (below) and use dynamometer testing to assure each engine meets John Deere specifications (right).



The John Deere Reman process.

Here's a quick recap of our remanufacturing process. All parts are first completely disassembled, then thoroughly cleaned by either a bake or chemical cleaning process. All major parts are inspected for cracks using a Magna-Glo process. In engines, for example, this includes the block, crankshaft and cylinder head. All parts are then dimensionally verified against the latest John Deere parts specifications. Any part not meeting original factory specifications is either scrapped or brought back to specification by various John Deere-approved remanufacturing processes. The product is then assembled using the same assembly processes



The Reman process begins when a damaged or worn-out part is brought in (top left), completely disassembled (top right), then thoroughly cleaned and visually inspected (right), replacing all non-salvageable and obsolete parts with new John Deere parts.

when it was produced new. Finally, each product must pass a thorough testing process before shipment. All wear-type parts such as pistons, liners, bushing, bearings, gaskets and O-rings are replaced (not remanufactured) 100 percent of the time with new John Deere parts.



A certified technician prepares a crankshaft for inspection.



(Top Row) Before: a cylinder head is prepared for cleaning. After: a cylinder head is thoroughly cleaned. After cleaning, all parts are sorted and identified. (Bottom Row) Final inspection assures perfect engine block dimensions and like-new performance. Crankshaft dimensions are verified for precision to help deliver assured reliability. Engines are dynamometer-tested to achieve like-new horsepower and torque ratings.

Nobody offers more than John Deere Reman.

Built for the most demanding applications: yours.

Every Reman engine model is application specific, meaning the engine is built precisely for your specific vehicle. It has the correct oil pan, water pump, rocker arm cover and other parts, in other words. You won't have to "switch out" parts that don't fit the application from the core engine. This helps reduce labor costs for each application, ultimately increasing your uptime in the field.

Designed to exceed all other remanufactured products.

The reason is simple. Unlike any other remanufactured products you'll find on the market, John Deere Reman uses 100 percent genuine John Deere parts. In other words, we don't use any aftermarket or "might-fit" parts. We produce to all latest OEM specifications. Nobody else can match our quality because nobody else has John Deere's proven expertise in agricultural equipment. We control every step of the design and manufacturing to assure you the top quality you expect from John Deere.

ENGINES

- Complete engines
- Complete block assemblies
- Basic engines
- Short blocks

FUEL INJECTION

- Pumps
- Nozzles

HYDRAULIC AND DRIVE-TRAIN

- Pumps
- Manifolds
- Torque converters
- Axles
- Cylinders
- Valves
- Transmissions
- Reversers

COMPONENTS

- Connecting rods
- Cylinder heads
- Water and oil pumps
- Crankshafts
- Turbochargers

ELECTRICAL

- Starters
- Alternators
- AC compressors

ELECTRONIC

- Controllers
- Electro-Hydraulic Joystick



Who knows machinery better than your John Deere dealer?

John Deere Reman has received positive feedback from the very people who know it best: John Deere dealers. They've seen the difference it can make for their customers in like-new parts performance and reliability as well as dramatic savings. Here's what many of them say:

"There are several reasons why I recommend Reman to our customers. The number one reason, of course, being the quality. I need to sell my customers something I know they can depend on, and John Deere Reman products provide that quality. They have been dependable, their track record has been phenomenally great and we have great confidence in Reman."

— Thomas, Parts Manager, Michigan

"With a lot of the companies that supply aftermarket parts, you don't know the quality or the warranty on them or even how long they're actually going to last. We know that with Reman, our customers get a good product, a good warranty and a solid company that will stand behind it."

— Terry, Parts Manager, California

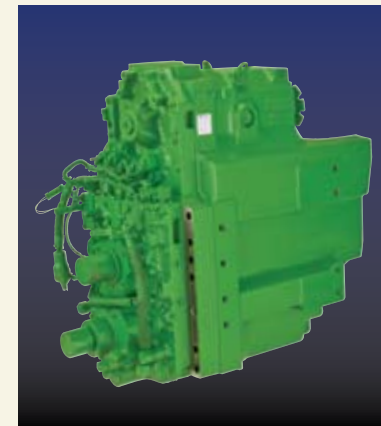
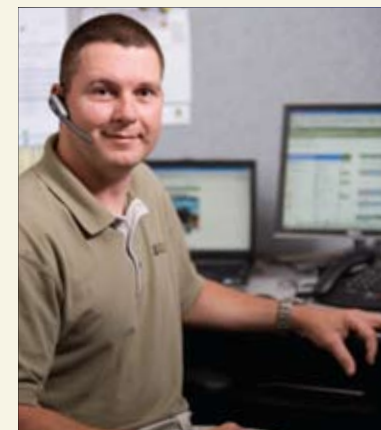
"Our dealership recommends Reman because it's a John Deere product. We know they stand behind their product, the warranty support is there and we know they're going to be in business tomorrow. Reman treats us very well. They're quick to answer our problems, very good in warranty support, very good at ordering product and delivering it on time."

— Boyd, Dealer Principal, Saskatchewan

"Instead of doing an overhaul if we can order an engine through Reman, we usually have it within two days and the installation is much quicker. It's also less expensive for our customers, which they appreciate. Warranties are normally longer than what they are on the new products and I know customers appreciate that."

— Dennis, Service Manager, Kansas

As input costs continue to rise, there's no better time to look into John Deere Reman parts and components. Why buy new when you can get same-as-new parts and warranty at a fraction of the cost? Ask your John Deere dealer about the many Reman choices for your tractor.



See for yourself why there's no substitute for genuine John Deere Reman parts such as the differential (left) and transmission (above). Questions? Your John Deere customer service representative (top) has the answers you need. Your John Deere dealer (right) has the training, the tools, the knowledge and the personal experience to get you the best part at the best price.

